

# 金輪牌工業用縫紉機

GOLDEN WHEEL INDUSTRIAL SEWING MACHINE

## 零件分解圖

PARTS BOOK

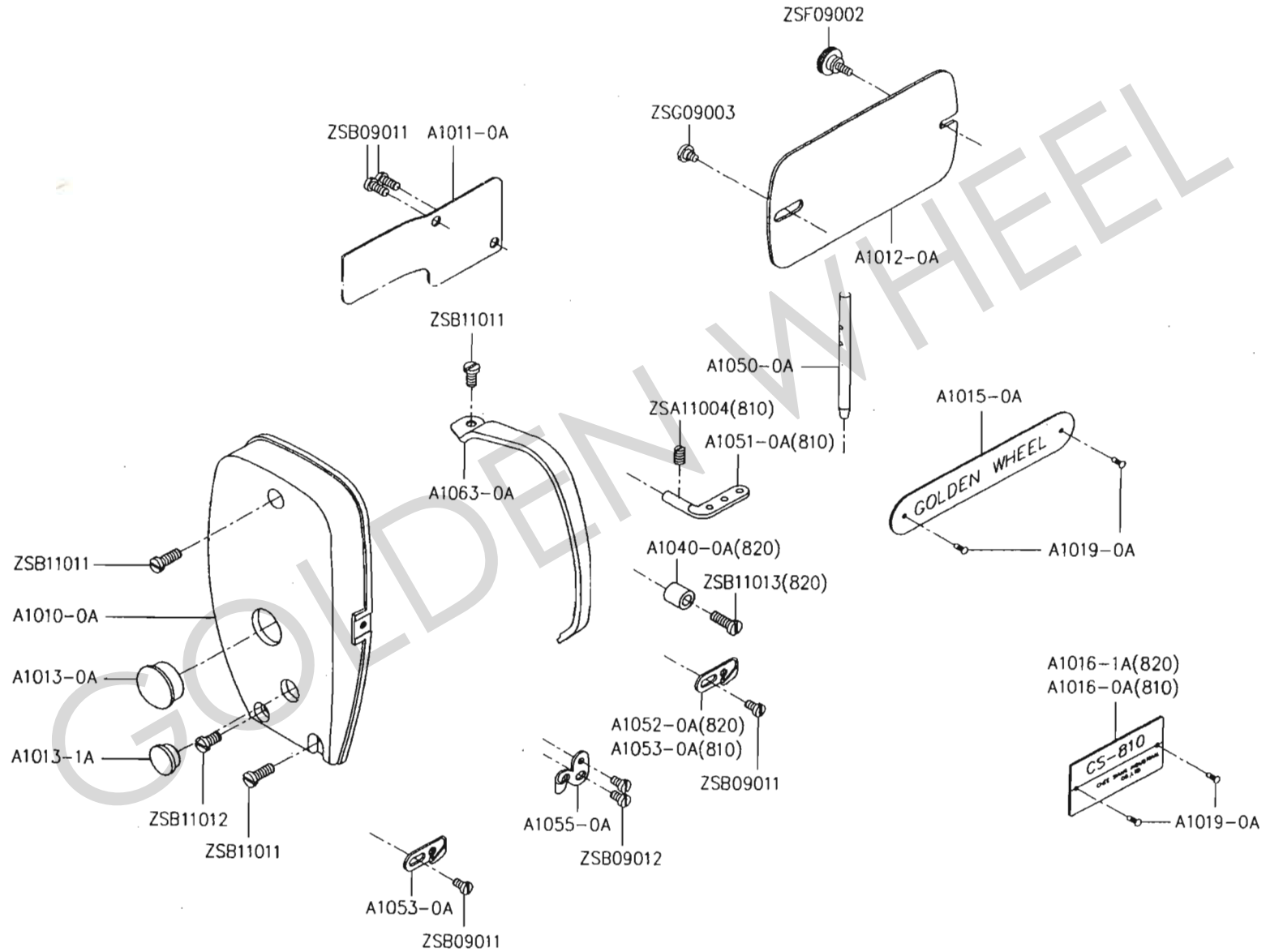
MODEL : CS-810/820

啓翔股份有限公司  
**CHEE SIANG INDUSTRIAL CO., LTD.**

# MODEL : CS-810/820

索引	INDEX	PAGE
A、 本體部份	ARM BED AND ITS ACCESSORIES	2-3
B、 縫線壓力調整機構	UPPER THREAD TENSION REGULATOR MECHANISM	4-5
C、 針棒、天秤部份	NEEDLE BAR AND TAKE-UP LEVER MECHANISM	6-7
D、 上軸、豎軸部份	UPPER SHAFT AND VERTICAL SHAFT MECHANISM	8-9
E、 倒縫機構	STITCH REGULATOR MECHANISM	10-11
F、 押棒部份	PRESSER FOOT MECHANISM	12-13
G、 下軸、上下送料軸部份	ROTATING HOOK SHAFT AND FEED LIFTING ROCK SHAFT MECHANISM	14-15
H、 釜軸機構	HOOK MECHANISM	16-17
I、 釜軸機構	HOOK MECHANISM	18-19
J、 給油機構	OIL LUBRICATION MECHANISM	20-21
K、 特別配件組	SPECIAL PARTS	22-23
L、 附件	ACCESSORIES	24-25
M、 零件號碼與頁數對照	NUMERICAL PARTS-LIST	26-28

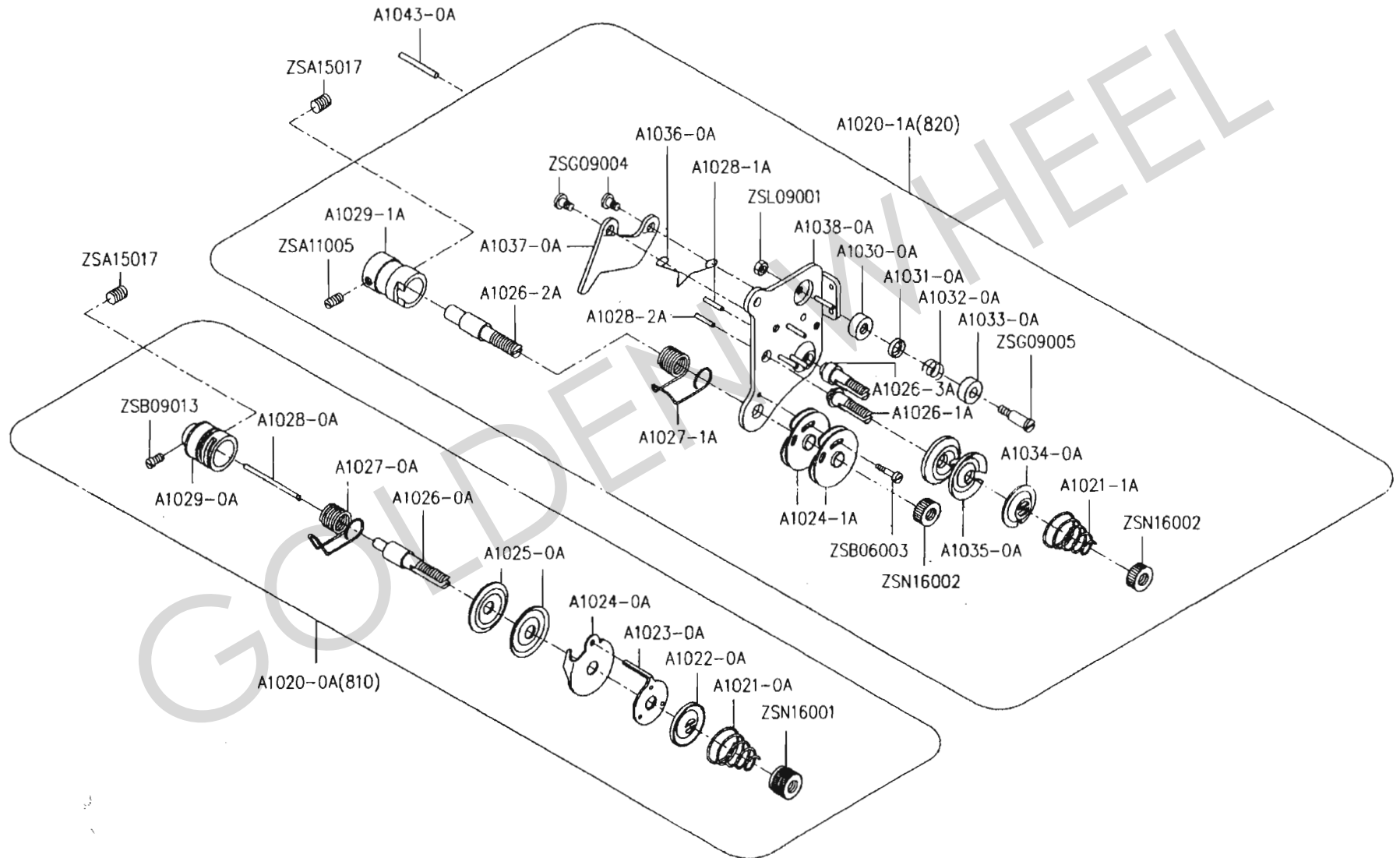
# A.CS-810/820 本體部份 ARM BED AND ITS ACCESSORIES



## A、CS-810/820 本體部份 ARM BED AND ITS ACCESSORIES

零件號碼 Part No	零件名稱	Name of Part	件數 Q'TY		備註 Remarks
			810	820	
A1010-0A	面板	FACE PLATE	1	1	
A1011-0A	小防砂板	SIDE COVER	1	1	
A1012-0A	大防砂板	ARM SIDE COVER	1	1	
A1013-0A	面板塞	RUBBER CORK	1	1	
A1013-1A	面板塞	RUBBER CORK	1	1	
A1015-0A	公司銘板	NAME PLATE	1	1	
A1016-0A	機型銘板	MODEL PLATE	1	0	
A1016-1A	機型銘板	MODEL PLATE	0	1	
A1019-0A	鉚釘	PIN	4	4	
A1040-0A	襯套	BUSHING	0	1	
A1050-0A	線柱	SPOOL PIN	1	2	
A1051-0A	三孔線掛	3 HOLE THREAD RETAINER	1	1	
A1052-0A	線掛	THREAD GUIDE	0	1	
A1053-0A	線掛	THREAD GUIDE	2	1	
A1055-0A	線掛	THREAD GUIDE	1	1	
A1063-0A	天秤蓋	THREAD TAKE-UP COVER	1	1	
ZSA11004	螺絲	SCREW (11/64-40x3.5)	1	1	
ZSB09011	螺絲	SCREW (9/64-40x6.5)	4	4	
ZSB09012	螺絲	SCREW (9/64-40x4.5)	1	1	
ZSB11011	螺絲	SCREW (11/64-40x9)	3	3	
ZSB11012	螺絲	SCREW (11/64-40x8)	1	1	
ZSB11013	螺絲	SCREW (11/64-40x16.5)	0	1	
ZSF09002	螺絲	SCREW (9/64-40x7.5)	1	1	
ZSG09003	螺絲	SCREW (9/64-40)	1	1	

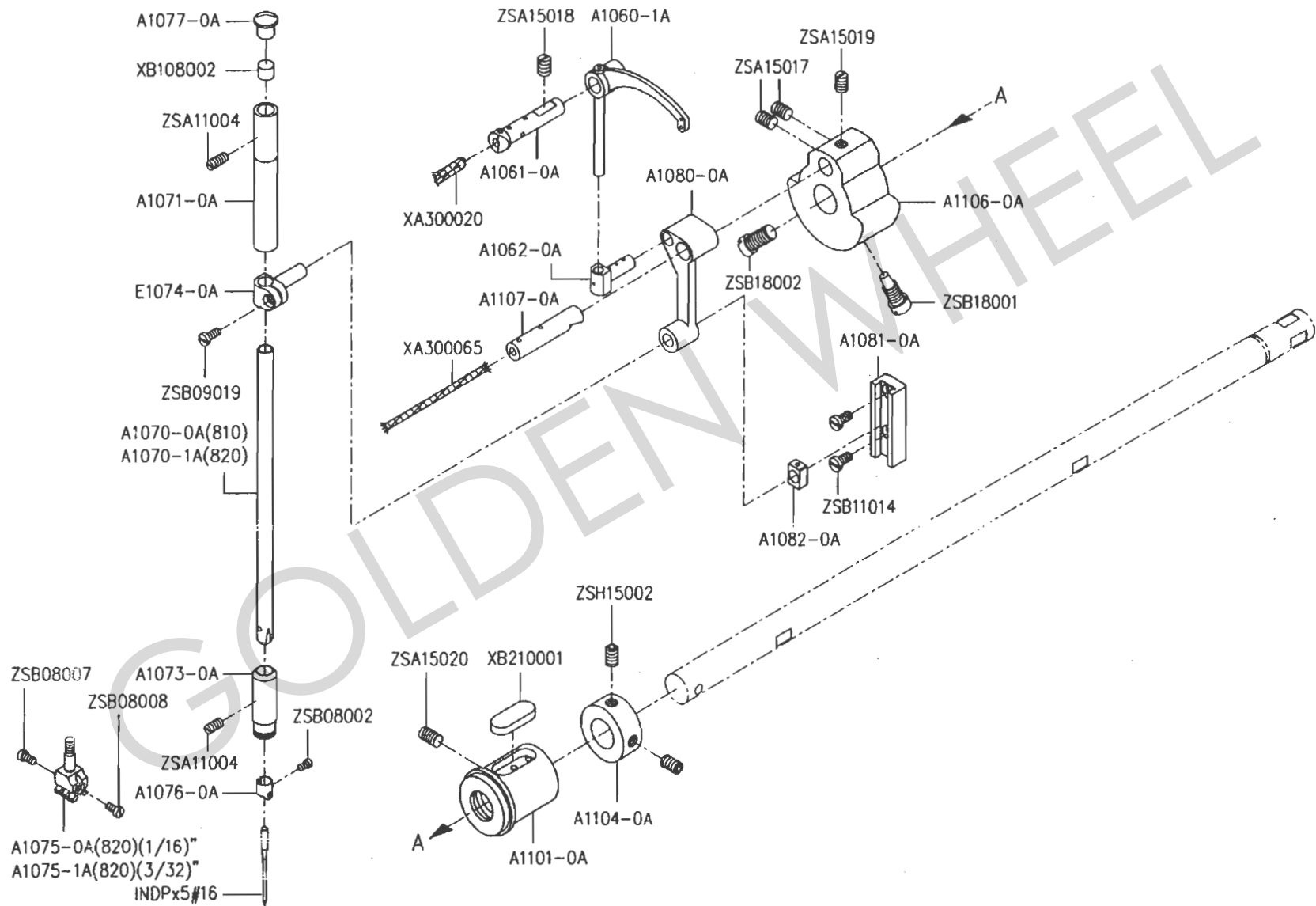
# B.CS-810/820 縫線壓力調整機構 UPPER THREAD TENSION REGULATOR MECHANISM



B、CS-810/820 縫線壓力調整機構 UPPER THREAD TENSION REGULATOR MECHANISM

零件號碼 Part No	零件名稱	Name of Part	件數 Q'TY		備註 Remarks
			810	820	
A1020-0A	縫線壓力調整組	THREAD TENSION REGULATOR ASSY.	1	0	
A1020-1A	縫線壓力調整組	THREAD TENSION REGULATOR ASSY.	0	1	
A1021-0A	調整彈簧	THREAD TENSION SPRING	1	0	
A1021-1A	調整彈簧	THREAD TENSION SPRING	0	2	
A1022-0A	彈簧底座	TENSION RELEASING DISC	1	0	
A1023-0A	固定盤	TENSION REGULATOR STOP PLATE	1	0	
A1024-0A	過線盤組	TENSION REGULATOR BRACKET	1	0	
A1024-1A	過線盤組	TENSION REGULATOR BRACKET	0	2	
A1025-0A	壓線盤	TENSION DISC	2	0	
A1026-0A	壓力調整螺絲棒	THREAD TENSION STUD	1	0	
A1026-1A	壓力調整螺絲棒	THREAD TENSION STUD	0	1	
A1026-2A	壓力調整螺絲棒	THREAD TENSION STUD	0	1	
A1026-3A	壓力調整螺絲棒	THREAD TENSION STUD	0	1	
A1027-0A	吊線彈簧	THREAD TAKE-UP SPRING	1	0	
A1027-1A	吊線彈簧	THREAD TAKE-UP SPRING	0	1	
A1028-0A	鬆線銷	TENSION RELEASING PIN	1	0	
A1028-1A	鬆線銷	TENSION RELEASING PIN	0	1	
A1028-2A	鬆線銷	TENSION RELEASING PIN	0	1	
A1029-0A	彈簧座	THREAD TENSION REGULATOR BUSHING	1	0	
A1029-1A	彈簧座	THREAD TENSION REGULATOR BUSHING	0	1	
A1030-0A	過線孔台	THREAD GUIDE BRACKET	0	2	
A1031-0A	過線孔圓盤	THREAD GUIDE DISC	0	2	
A1032-0A	壓力彈簧	THREAD TENSION SPRING	0	2	
A1033-0A	過線孔內蓋	CONTROLLER COVER	0	2	
A1034-0A	壓力調整器壓盤	TENSION REGULATOR PRESSER DISC	0	2	
A1035-0A	壓線盤	TENSION DISC	0	4	
A1036-0A	壓板彈簧	TENSION RELEASING SPRING	0	1	
A1037-0A	彈簧板	TENSION RELEASING PLATE	0	1	
A1038-0A	上線壓力板	UPPER THREAD TENSION PLATE	0	1	
A1043-0A	鬆線銷	TENSION RELEASING PIN	0	1	
ZSA11005	螺絲	SCREW (11/64-40x5.5)	0	1	
ZSA15017	螺絲	SCREW (15/64-28x3.5)	1	1	
ZSB06003	螺絲	SCREW (3/32-56x12)	0	1	
ZSB09013	螺絲	SCREW (9/64-40x4)	1	0	
ZSG09004	螺絲	SCREW (9/64-40)	0	2	
ZSG09005	螺絲	SCREW (9/64-40)	0	2	
ZSL09001	螺帽	NUT (9/64-40x3)	0	2	
ZSN16001	螺帽	NUT (1/4-40x9.5)	1	0	
ZSN16002	螺帽	NUT (1/4-40x5)	0	3	

# C.CS-810/820 針棒、天秤部份 NEEDLE BAR AND TAKE-UP LEVER MECHANISM

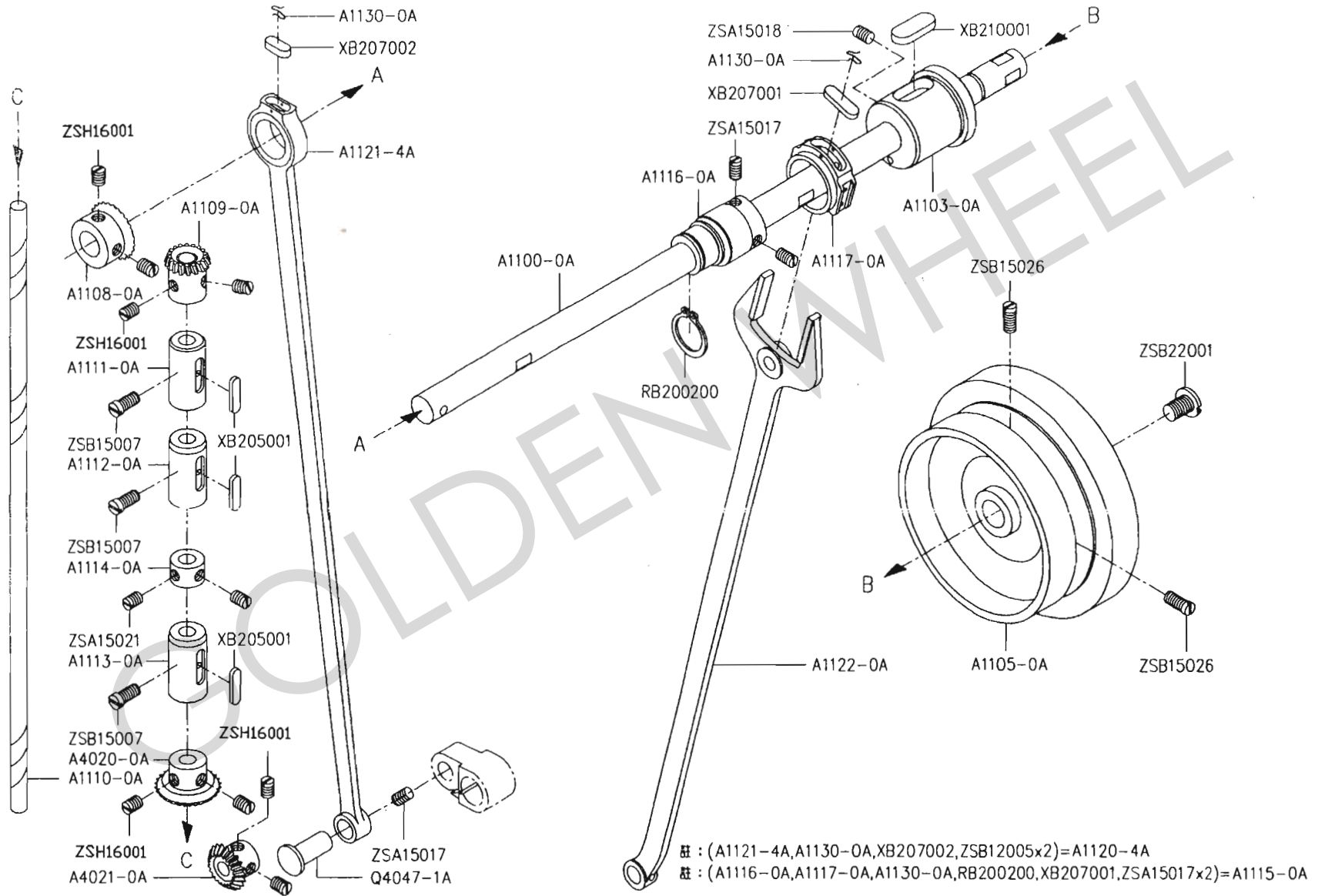


C、CS-810/820 針棒、天秤部份 NEEDLE BAR AND TAKE-UP LEVER MECHANISM

零件號碼 Part No	零件名稱	Name of Part	件數 Q'TY		備註 Remarks
			810	820	
A1060-1A	天秤	TAKE-UP LEVER	1	1	
A1061-0A	天秤心	TAKE-UP LEVER SUPPORT STUD	1	1	
A1062-0A	天秤滑塊	TAKE-UP SLIDE BLOCK	1	1	
A1070-0A	針棒	NEEDLE BAR	1	0	
A1070-1A	針棒	NEEDLE BAR	0	1	
A1071-0A	針棒套管(上)	NEEDLE BAR BUSHING (UPPER)	1	1	
A1073-0A	針棒套管(下)	NEEDLE BAR BUSHING (UNDER)	1	1	
A1075-0A	針榴(1/16)	NEEDLE CLAMP	0	1	
A1075-1A	針榴(3/32)	NEEDLE CLAMP	0	1	
A1076-0A	針棒線掛	THREAD GUIDE	1	0	
A1077-0A	油蓋	NEEDLE BAR UPPER BUSHING CAP	1	1	
A1080-0A	針棒連接器	NEEDLE BAR CONNECTING CRANK ROD	1	1	
A1081-0A	針棒連接器導槽	NEEDLE BAR CONNECTING LINK GUIDE	1	1	
A1082-0A	滑塊	NEEDLE BAR GUIDE SLIDE BLOCK	1	1	
A1101-0A	上軸套管(左)	UPPER SHAFT BUSHING (LEFT)	1	1	
A1104-0A	上軸定環	UPPER SHAFT COLLAR	1	1	
A1106-0A	凸輪	CRANK	1	1	
A1107-0A	凸輪固定銷	CRANK PIN	1	1	
E1074-0A	針棒鉗	NEEDLE BAR CONNECTING STUD	1	1	
INDPx5#16	針	NEEDLE	1	2	
XA300020	油線	OIL WICK	1	1	
XA300065	油線	OIL WICK	1	1	
XB108002	油棉	OIL FELT	1	1	
XB210001	油棉	OIL FELT	1	1	
ZSA11004	螺絲	SCREW (11/64-40x3.5)	2	2	
ZSA15017	螺絲	SCREW (15/64-28x8.5)	1	1	
ZSA15018	螺絲	SCREW (15/64-28x19)	1	1	
ZSA15019	螺絲	SCREW (15/64-28x3)	1	1	
ZSA15020	螺絲	SCREW (15/64-28x11)	1	1	
ZSB08002	螺絲	SCREW (1/8-44x4.5)	1	0	
ZSB08007	螺絲	SCREW (1/8-44x3)	0	1	
ZSB08008	螺絲	SCREW (1/8-44x4)	0	1	
ZSB09019	螺絲	SCREW (9/64-40x6)	1	1	
ZSB11014	螺絲	SCREW (11/64-40x8.5)	2	2	
ZSB18001	螺絲	SCREW (9/32-28x16)	1	1	
ZSB18002	螺絲	SCREW (9/32-28x13)	1	1	
ZSH15002	螺絲	SCREW (15/64-28x8)	2	2	



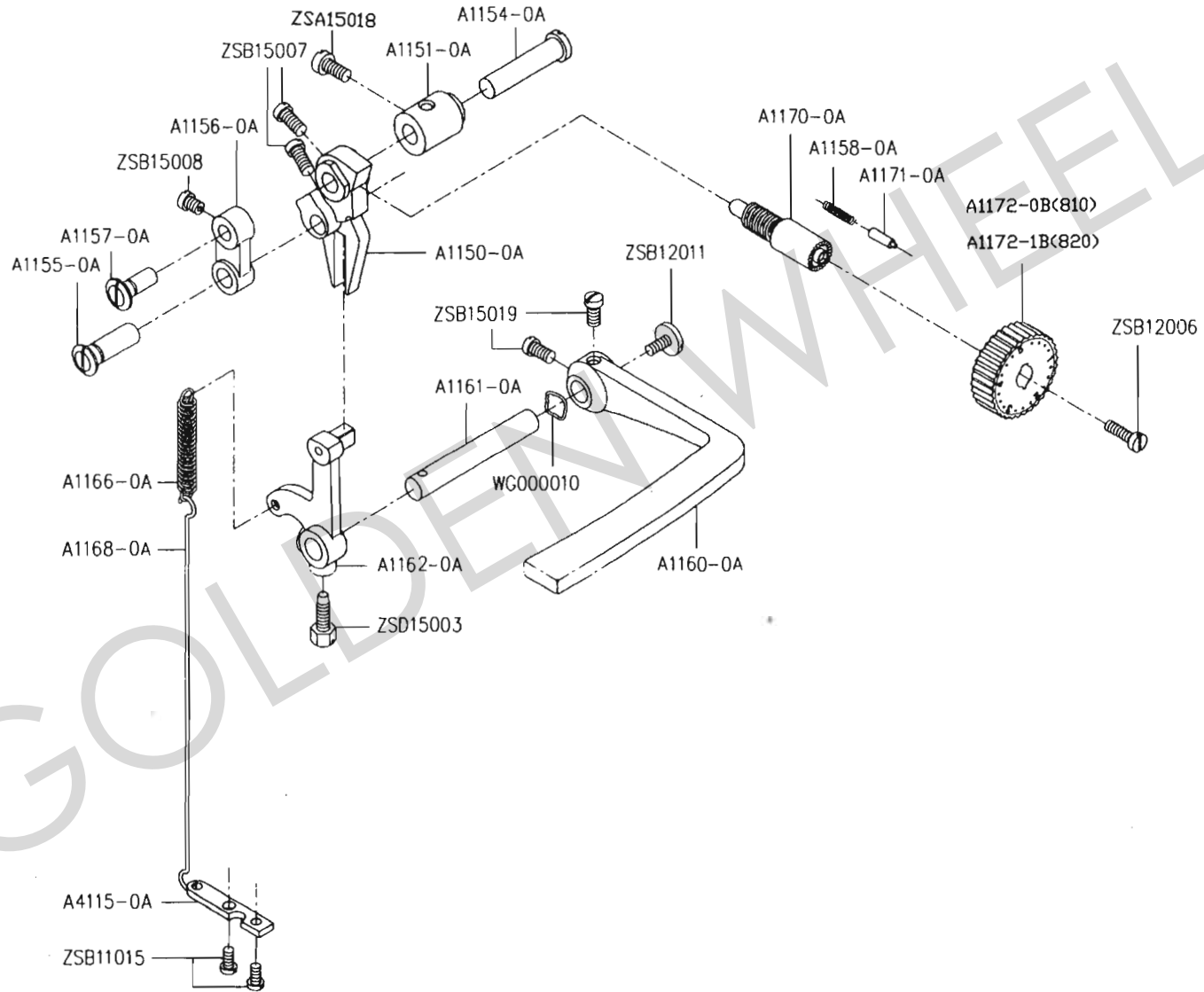
# D. CS-810/820 上軸、豎軸部份 UPPER SHAFT AND VERTICAL SHAFT MECHANISM



D、CS-810/820 上軸、豎軸部份 UPPER SHAFT AND VERTICAL SHAFT MECHANISM

零件號碼 Part No	零件名稱	Name of Part	件數 Q, TY	備註 Remarks
A1100-0A	上軸	UPPER SHAFT	1	
A1103-0A	上軸套管(右)	UPPER SHAFT BUSHING (RIGHT)	1	
A1105-0A	皮帶輪	PULLEY	1	
A1108-0A	齒輪(上軸)	BEVEL GEAR (UPPER SHAFT)	1	
A1109-0A	齒輪(豎軸)	BEVEL GEAR (VERTICAL SHAFT UPPER)	1	
A1110-0A	豎軸	VERTICAL SHAFT	1	
A1111-0A	豎軸套管(上)	VERTICAL SHAFT BUSHING (UPPER)	1	
A1112-0A	豎軸套管(中)	VERTICAL SHAFT BUSHING (MIDDLE)	1	
A1113-0A	豎軸套管(下)	VERTICAL SHAFT BUSHING (UNDER)	1	
A1114-0A	豎軸定環	VERTICAL SHAFT COLLAR	1	
A1115-0A	偏心輪組	FEED CAM ASSY.	1	
A1116-0A	偏心輪	FEED CAM	1	
A1117-0A	偏心輪環	FEED CAM RING	1	
A1120-0A	曲柄帶動桿組	CRANK ROD ASSY.	1	
A1121-4A	曲柄動桿	CRANK ROD	1	
A1122-0A	連接叉桿	FEED FORKED CONNECTION	1	
A1130-0A	油棉固定彈簧	SPRING	2	
A4020-0A	齒輪(豎軸下)	BEVEL GEAR (VERTICAL SHAFT UNDER)	1	
A4021-0A	齒輪(下軸)	BEVEL GEAR (HOOK SHAFT)	1	
Q4047-1A	銷	PIN	1	
RB200200	C形扣環	STOP RING	1	
XB205001	油棉	OIL FELT	3	
XB207001	油棉	OIL FELT	2	
XB207002	油棉	OIL FELT	1	
XB210001	油棉	OIL FELT	1	
ZSA15017	螺絲	SCREW (15/64-28x8.5)	3	
ZSA15018	螺絲	SCREW (15/64-28x19)	1	
ZSA15021	螺絲	SCREW (15/64-28x4.5)	2	
ZSH16001	螺絲	SCREW (SM1/4-40x6)	6	
ZSH16001	螺絲	SCREW (SM1/4-40x6)	2	
ZSB15007	螺絲	SCREW (15/64-28x12)	3	
ZSB15026	螺絲	SCREW (15/64-28x18)	2	
ZSB22001	螺絲	SCREW (11/32-28x13)	1	

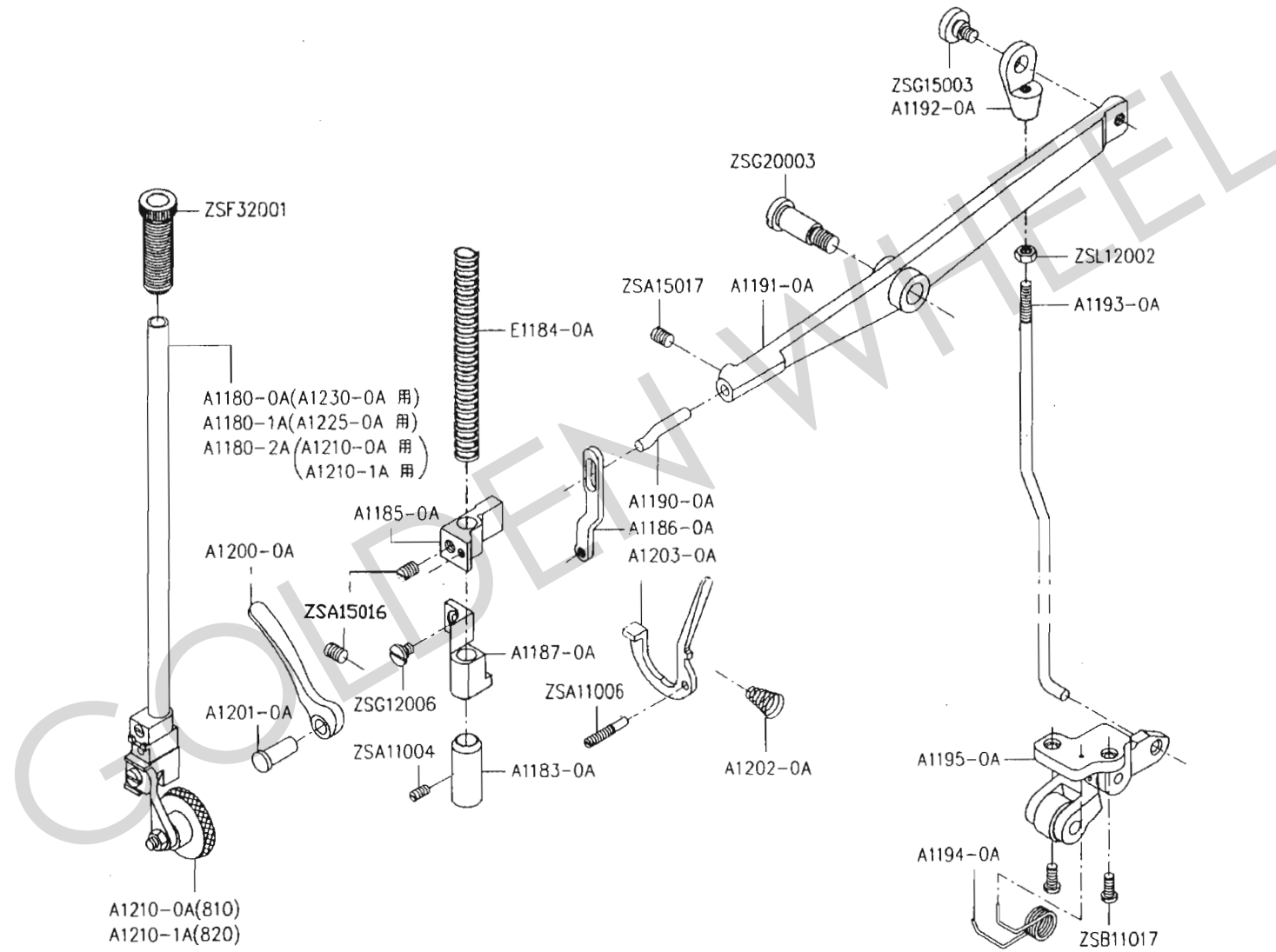
# E. CS-810/820 倒縫機構 STITCH REGULATOR MECHANISM



E、CS-810/820 倒縫機構 STITCH REGULATOR MECHANISM

零件號碼 Part No	零件名稱	Name of Part	件數 Q, TY	備註 Remarks
A1150-0A	三叉	FEED REGULATOR	1	
A1151-0A	三叉套管	FEED REGULATOR BUSHING	1	
A1154-0A	三叉固定銷	SET PIN	1	
A1155-0A	固定銷	SET PIN	1	
A1156-0A	送料連桿	FEED CONNECTING LINK	1	
A1157-0A	固定銷	SET PIN	1	
A1158-0A	壓縮彈簧	SPRING	1	
A1160-0A	倒縫桿	REVERSE LEVER	1	
A1161-0A	倒縫軸	REVERSE LEVER SHAFT	1	
A1162-0A	倒縫曲柄	REVERSE SEWING CRANK ASSY.	1	
A1166-0A	引伸彈簧	SPRING	1	
A1168-0A	引棒	KNEE LIFTER ROD	1	
A1170-0A	螺桿	SCREW BAR	1	
A1171-0A	定位銷	STIPPER PIN	1	
A1172-0B	刻度盤組	STITCH LENGTH REGULATOR DIAL ASSY.	1	810
A1172-1B	刻度盤組	STITCH LENGTH REGULATOR DIAL ASSY.	1	820
A4115-0A	彈簧固定板	BRACKET	1	
WG000010	墊圈	WASHER	1	
ZSB11015	螺絲	SCREW (11/64-40x8.5)	2	
ZSB12006	螺絲	SCREW (3/16-28x10)	1	
ZSB12011	螺絲	SCREW (3/16-28x10)	1	
ZSB15007	螺絲	SCREW (15/64-28x12)	2	
ZSA15018	螺絲	SCREW (SM15/64-28x19)	1	
ZSB15018	螺絲	SCREW (15/64-28x12)	1	
ZSB15019	螺絲	SCREW (15/64-28x9)	2	
ZSD15003	螺絲	SCREW (15/64-28x16.5)	1	

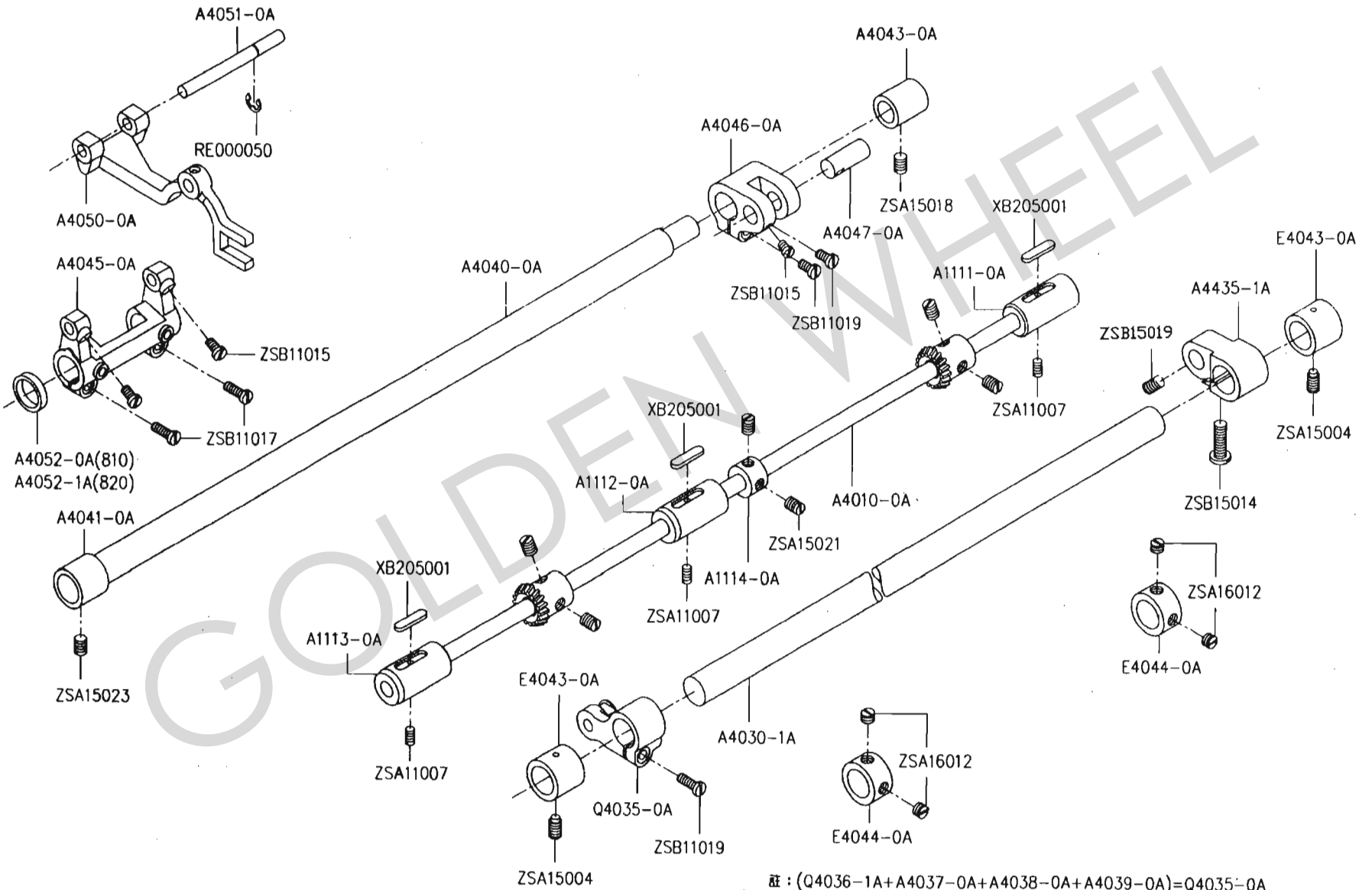
# F.CS-810/820 押棒部份 PRESSER FOOT MECHANISM



F、CS-810/820 押棒部份 PRESSER FOOT MECHANISM

零件號碼 Part No	零件名稱	Name of Part	件數 Q'TY		備註 Remarks
			810	820	
A1180-0A	押棒	PRESSER BAR	1	0	
A1180-1A	押棒	PRESSER BAR	1	1	
A1180-2A	押棒	PRESSER BAR	1	1	
A1183-0A	押棒套管	PRESSER BAR BUSHING	1	1	
A1185-0A	壓棒固定座	PRESSER BAR HOLDER	1	1	
A1186-0A	連接板	KNEE LIFTER LEVER LINK	1	1	
A1187-0A	押棒套管	PRESSER BAR BUSHING	1	1	
A1190-0A	壓棒提升桿銷	KNEE LIFTER LEVER PIN	1	1	
A1191-0A	壓棒提升桿	KNEE LIFTER LEVER	1	1	
A1192-0A	壓棒提升桿接頭	KNEE LIFTER LEVER JOINT	1	1	
A1193-0A	連接棒	KNEE LIFTER CONNECTING ROD	1	1	
A1194-0A	扭轉彈簧	SPRING	1	1	
A1195-0A	炮台組	KNEE LIFTER CONNECTING ROD FINGER	1	1	
A1200-0A	押棒提桿	PRESSER BAR LIFTER	1	1	
A1201-0A	押棒提桿銷	PRESSER BAR LIFTER PIN	1	1	
A1202-0A	壓縮彈簧	PRESSER SPRING	1	1	
A1203-0A	鬆線桿	TENSION RELEASING	1	1	
A1210-0A	輪錢組	ROLLER PRESSER ASSY.	1	0	
A1210-1A	輪錢組	ROLLER PRESSER ASSY.	0	1	
E1184-0A	壓縮彈簧	PRESSER SPRING	1	1	
ZSA11004	螺絲	SCREW (11/64-40x3.5)	1	1	
ZSA11006	螺絲	SCREW (11/64-40x23.5)	1	1	
ZSA15016	螺絲	SCREW (SM15/64-28x7)	3	3	
ZSB11017	螺絲	SCREW (11/64-40x12)	2	2	
ZSF32001	螺絲	SCREW (1/2-28x38)	1	1	
ZSG12006	螺絲	SCREW (3/16-28)	1	1	
ZSG15003	螺絲	SCREW (15/64-28)	1	1	
ZSG20003	螺絲	SCREW (5/16-24)	1	1	
ZSL12002	螺帽	NUT (3/16-32x3)	1	1	

# G. CS-810/820 下軸、上下送軸部份 ROTATING HOOK SHAFT AND FEED LIFTING ROCK SHAFT MECHANISM



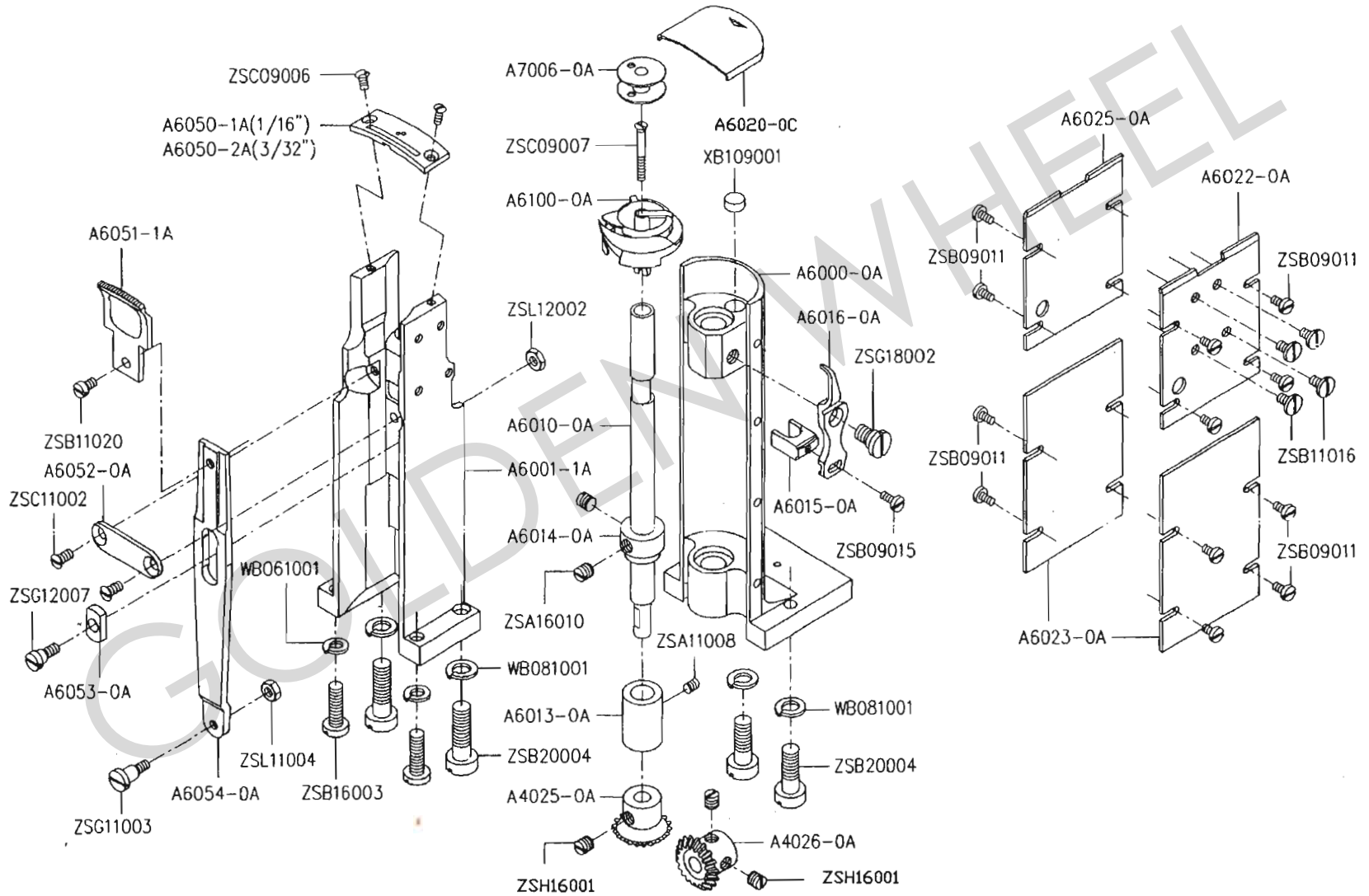
註：(Q4036-1A+A4037-0A+A4038-0A+A4039-0A)=Q4035-0A

G、CS-810/820 下軸、上下送料軸部份 ROTATING HOOK SHAFT AND FEED LIFTING ROCK SHAFT MECHANISM

零件號碼 Part No	零件名稱	Name of Part	件數 Q'TY		備註 Remarks
			810	820	
A1111-0A	下軸套管(右)	ROTATING HOOK SHAFT BUSHING (RINGT)	1	1	
A1112-0A	下軸套管(中)	ROTATING HOOK SHAFT BUSHING (MIDDLE)	1	1	
A1113-0A	下軸套管(左)	ROTATING HOOK SHAFT BUSHING (LEFT)	1	1	
A1114-0A	下軸定環	COLLAR	1	1	
A4010-0A	下軸	ROTATING HOOK SHAFT	1	1	
A4030-1A	上下送料軸	FEED LIFTING ROCK SHAFT	1	1	
A4040-0A	水平送料軸	FEED ROCK SHAFT	1	1	
A4041-0A	送料軸套管(左)	FEED ROCK SHAFT BUSHING (LEFT)	1	1	
A4043-0A	送料軸套管(右)	FEED ROCK SHAFT BUSHING (RIGHT)	1	1	
A4045-0A	送料軸曲柄(左)	FEED ROCK SHAFT CRANK (LEFT)	1	1	
A4046-0A	送料軸曲柄(右)	FEED ROCK SHAFT CRANK (RIGHT)	1	1	
A4047-0A	送料軸曲柄銷	FEED ROCK SHAFT CRANK PIN	1	1	
A4050-0A	送料台	FEED BAR	1	1	
A4051-0A	送料台軸	FEED BAR SHAFT	1	1	
A4052-0A	墊圈	SLIDE WASHER	1	0	
A4052-1A	墊圈	SLIDE WASHER	0	1	
A4435-1A	上下送料腕(右)	CRANK	1	1	
E4043-0A	送料軸套管	BUSHING	2	2	
E4044-0A	送料齒定環	COLLAR	2	2	
Q4035-0A	上下送料軸曲柄組	FEED LIFTING ROCK SHAFT CRANK ASSY.	1	1	
RE000050	E扣環	E RING (E-5)	1	1	
XB205001	油棉	OIL FELT	3	3	
ZSA11007	螺絲	SCREW (11/64-40x8)	3	3	
ZSA15004	螺絲	SCREW (15/64-28x10.5)	2	2	
ZSA15018	螺絲	SCREW (15/64-28x19)	1	1	
ZSA15021	螺絲	SCREW (15/64-28x4.5)	2	2	
ZSA15023	螺絲	SCREW (15/64-28x10)	1	1	
ZSA16012	螺絲	SCREW (1/4-40x4)	4	4	
ZSB11015	螺絲	SCREW (11/64-40x8.5)	3	3	
ZSB15019	螺絲	SCREW (SM15/64-28x9)	2	2	
ZSB11019	螺絲	SCREW (11/64-40x13)	3	3	
ZSB15014	螺絲	SCREW (15/64-28x18)	1	1	



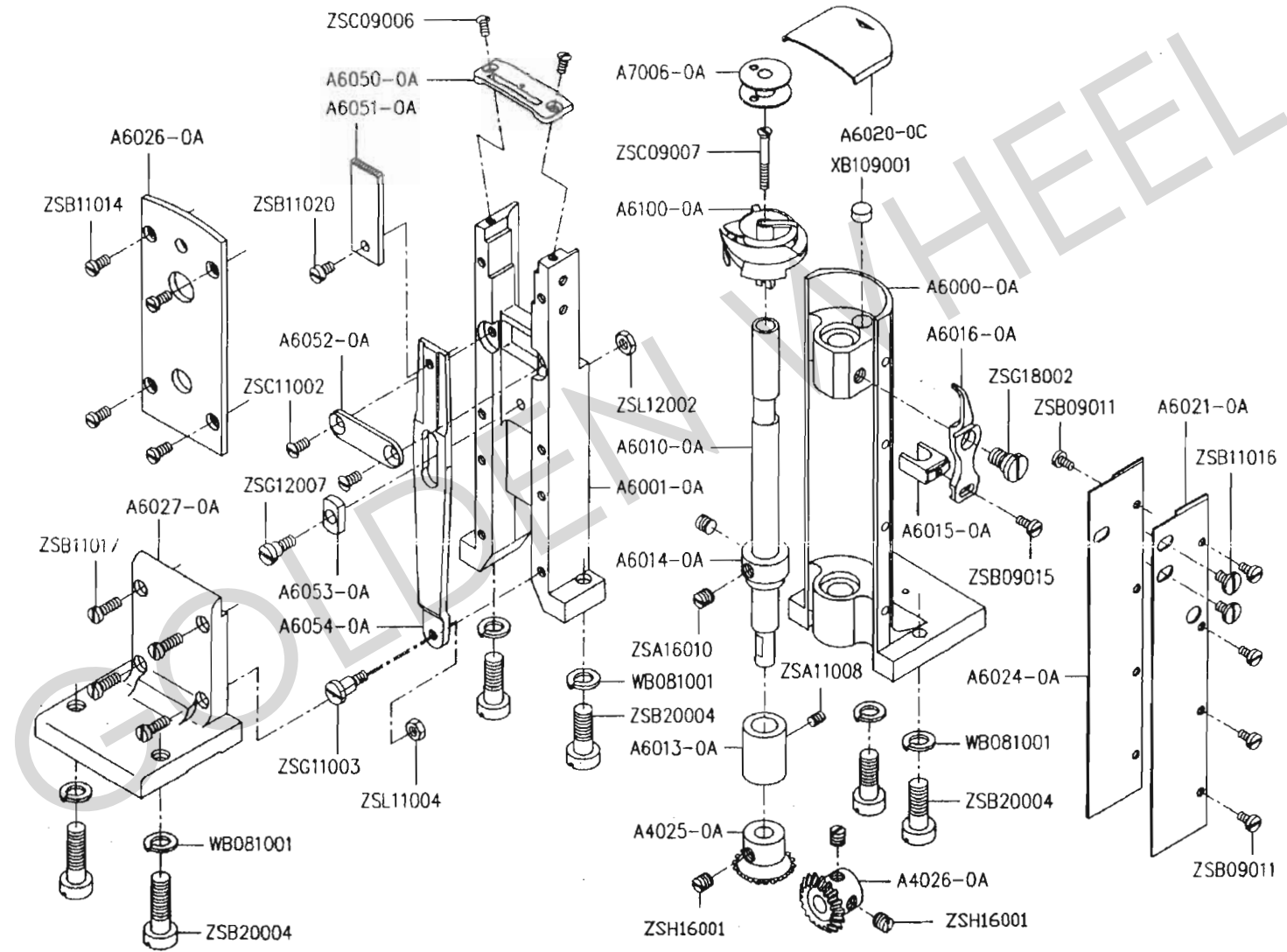
# H.CS-820 釜軸機構 HOOK MECHANISM



H、CS-820 釜軸機構 HOOK MECHANISM

零件號碼 Part No	零件名稱	Name of Part	件數 Q, TY	備註 Remarks
A4025-0A	斜齒輪	BEVEL GEAR	2	
A4026-0A	斜齒輪(下軸左)	HOOK SHAFT BEVEL GEAR (LOWER)	2	
A6000-0A	邊座	HOOK SHAFT SUPPORTER	2	
A6001-1A	隻針中座	FEED PLATE SET BRACKET	1	
A6010-0A	釜軸	HOOK SHAFT	2	
A6013-0A	釜軸套管	HOOK SHAFT BUSHING	2	
A6014-0A	釜軸定環	HOOK SHAFT COLLAR	2	
A6015-0A	牛角台	ROTATING HOOK OPENER BRACKET	2	
A6016-0A	牛角台	ROTATING HOOK OPENER	2	
A6020-0C	釜蓋	SLIDE PLATE	2	
A6022-0A	邊蓋板	COVER PLATE	1	
A6023-0A	邊蓋板	COVER PLATE	2	
A6025-0A	邊蓋板	COVER PLATE	1	
A6050-1A	隻針針板	NEEDLE PLATE	1	
A6050-2A	隻針針板	NEEDLE PLATE	1	
A6051-1A	隻針狗齒	FEED DOG	1	
A6052-0A	狗齒支撐板	SUPPORTER PLATE	1	
A6053-0A	狗齒板滑塊	SQUARE BLOCK	1	
A6054-0A	送料板	FEED PLATE	1	
A6100-0A	梭頭	HOOK ASSY.	2	
A7006-0A	梭仔	BOBBIN	2	
WB061001	彈簧墊圈	SPRING WASHER	2	
WB081001	彈簧墊圈	SPRING WAHER	8	
XB109001	油棉	OIL FELT	2	
ZSA11008	螺絲	SCREW (11/64-40x5.5)	2	
ZSH16001	螺絲	SCREW (SM1/4-40x6)	12	
ZSB09011	螺絲	SCREW (9/64-40x6.5)	16	
ZSB09015	螺絲	SCREW (9/64-40x9)	2	
ZSB11016	螺絲	SCREW (11/64-40x6.5)	4	
ZSB11020	螺絲	SCREW (11/64-40x6.5)	1	
ZSB16003	螺絲	SCREW (1/4-24x15)	2	
ZSB20004	螺絲	SCREW (5/16-24x26)	6	
ZSC09006	螺絲	SCREW (9/64-40x8)	2	
ZSC09007	螺絲	SCREW (9/64-40x28)	2	
ZSC11002	螺絲	SCREW (11/64-40x9)	2	
ZSG11003	螺絲	SCREW (11/64-40)	1	
ZSG12007	螺絲	SCREW (3/16-32)	1	
ZSG18002	螺絲	SCREW (9/32-28)	2	
ZSL11004	螺帽	NUT (11/64-40x3.1)	1	
ZSL12002	螺帽	NUT (3/16-32x3)	1	

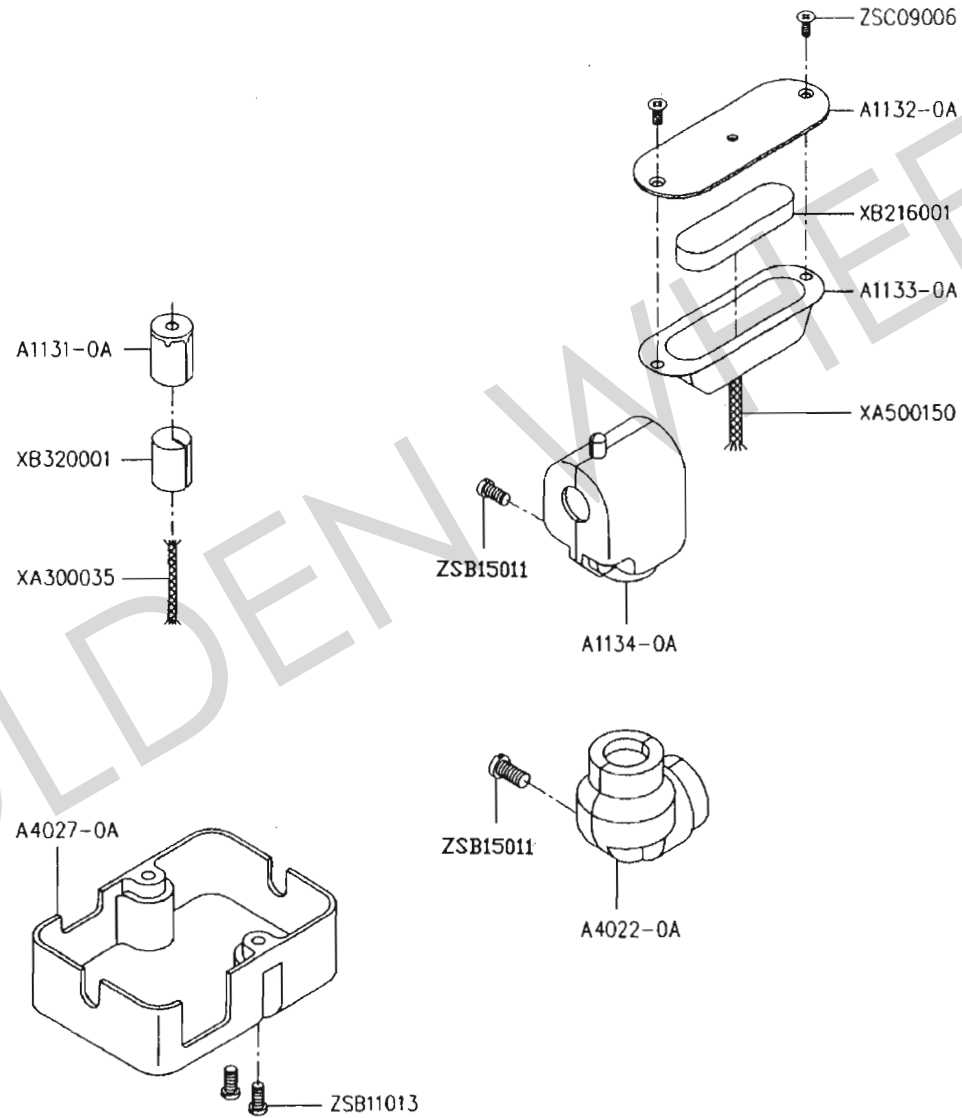
# I.CS-810 釜軸機構 HOOK MECHANISM



I、CS-810 釜軸機構 HOOK MECHANISM

零件號碼 Part No	零件名稱	Name of Part	件數 Q, TY	備註 Remarks
A4025-0A	斜齒輪	BEVEL GEAR	1	
A4026-0A	斜齒輪(下軸左)	HOOK SHAFT BEVEL GEAR (LOWER)	1	
A6000-0A	邊座	HOOK SHAFT SUPPORTER	1	
A6001-0A	隻針中座	FEED PLATE SET BRACKET	1	
A6010-0A	釜軸	HOOK SHAFT	1	
A6013-0A	釜軸套管	HOOK SHAFT BUSHING	1	
A6014-0A	釜軸定環	HOOK SHAFT COLLAR	1	
A6015-0A	牛角台	ROTATING HOOK OPENER BRACKET	1	
A6016-0A	牛角	ROTATING HOOK OPENER	1	
A6020-0C	釜蓋	SLIDE PLATE	1	
A6021-0A	前蓋板	COVER PLATE	1	
A6024-0A	後蓋板	COVER PLATE	1	
A6026-0A	左蓋板	COVER PLATE	1	
A6027-0A	直角台	SIDE COVER PLATE BRACKET	1	
A6050-0A	單針針板	NEEDLE PLATE	1	
A6051-0A	單針狗齒	FEED DOG	1	
A6052-0A	狗齒支撐板	SUPPORTER PLATE	1	
A6053-0A	狗齒板	SQUARE BLOCK	1	
A6054-0A	送料板	FEED PLATE	1	
A6100-0A	梭頭	HOOK ASSY.	1	
A7006-0A	梭仔	BOBBIN	1	
WB081001	彈簧墊圈	SPRING WAHER	6	
XB109001	油棉	OIL FELT	1	
ZSA11008	螺絲	SCREW (11/64-40x5.5)	1	
ZSH16001	螺絲	SCREW (SM1/4-40x6)	6	
ZSB09011	螺絲	SCREW (9/64-40x6.5)	8	
ZSB09015	螺絲	SCREW (9/64-40x9)	1	
ZSB11014	螺絲	SCREW (11/64-40x8.5)	4	
ZSB11016	螺絲	SCREW (11/64-40x6.5)	3	
ZSB11017	螺絲	SCREW (11/64-40x12)	4	
ZSB11020	螺絲	SCREW (11/64-40x6.5)	1	
ZSB20004	螺絲	SCREW (5/16-24x26)	6	
ZSC09006	螺絲	SCREW (9/64-40x8)	2	
ZSC09007	螺絲	SCREW (9/64-40x28)	1	
ZSC11002	螺絲	SCREW (11/64-40x9)	2	
ZSG11003	螺絲	SCREW (11/64-40)	1	
ZSG12007	螺絲	SCREW (3/16-32)	1	
ZSG18002	螺絲	SCREW (9/32-28)	1	
ZSL11004	螺帽	NUT (11/64-40x3.1)	1	
ZSL12002	螺帽	NUT (3/16-32x3)	1	

# J.CS-810/820 給油機構 OIL LUBRICATION MECHANISM

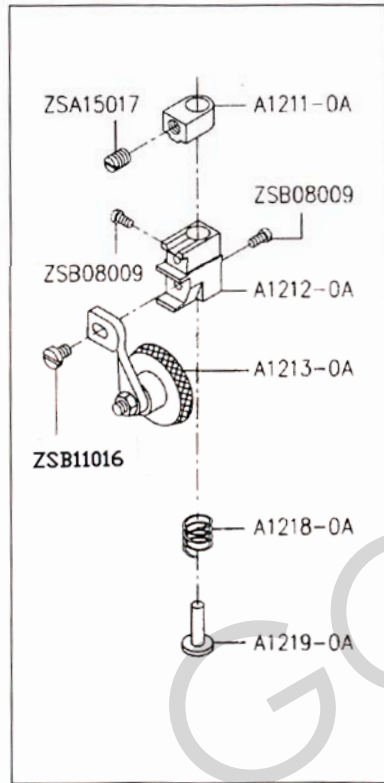


J、CS-810/820 給油機構 OIL LUBRICATION MECHANISM

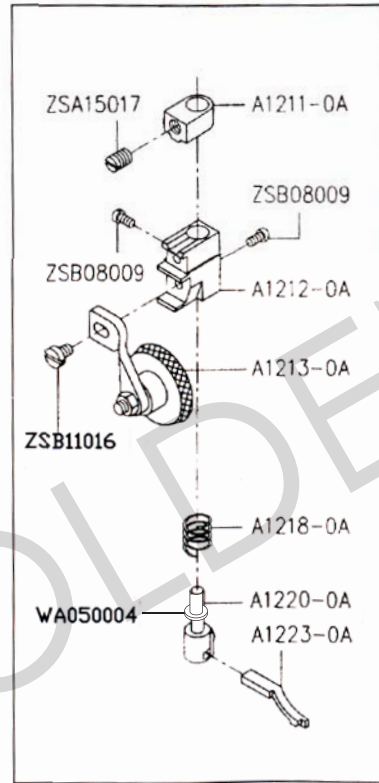
零件號碼 Part No	零件名稱	Name of Part	件數 Q, TY	備註 Remarks
A1131-0A	油蓋	OIL CAP	1	
A1132-0A	油槽蓋	COVER PLATE	1	
A1133-0A	油槽	OIL TANK (RIGHT)	1	
A1134-0A	上齒輪蓋組	GEAR BOX (UPPER SET)	1	
A4022-0A	下齒輪蓋組	GEAR BOX (LOWER SET)	1	
A4027-0A	齒輪箱	GEAR BOX (LOWER)	1	
XA300035	油線	OIL WICK	1	
XA500150	油線	OIL WICK	2	
XB216001	油棉	OIL FELT	1	
XB320001	油線	OIL WICK	1	
ZSB11013	螺絲	SCREW (11/64-40x16.5)	2	
ZSB15011	螺絲	SCREW (SM15/64-28×20)	1	
ZSB15011	螺絲	SCREW (SM15/64-28×20)	1	
ZSC09006	螺絲	SCREW (9/64-40x8)	2	

GOLDEN WHEEL

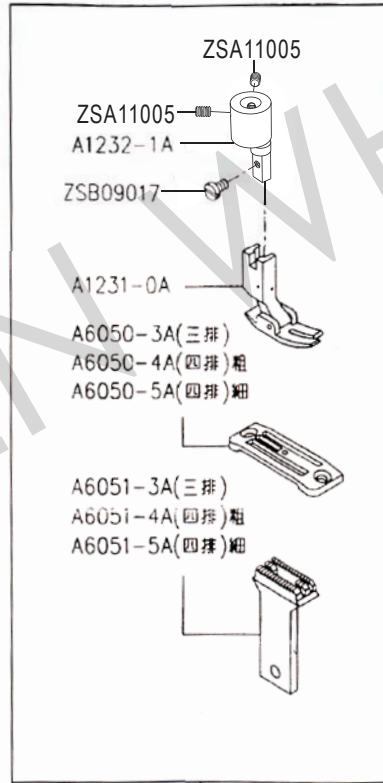
# K.CS-810/820 特別配件組 SPECIAL PARTS



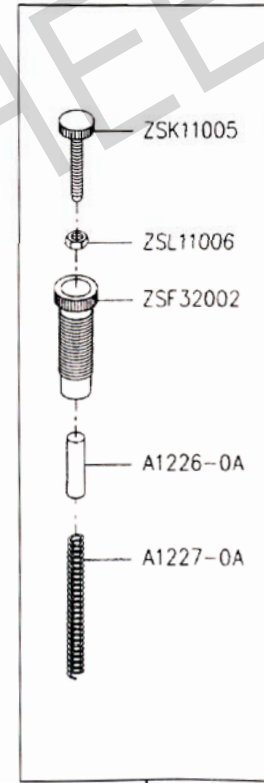
A1210-0A



A1210-1A



A1230-0A



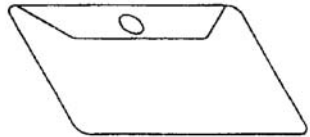
A1225-0A

K、CS-810/820 特別配件組 SPECIAL PARTS

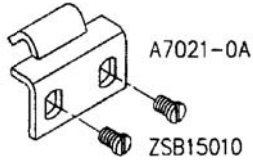
零件號碼 Part No	零件名稱	Name of Part	件數 Q'TY		備註 Remarks
			810	820	
A1210-0A	輪錢組	ROLLER PRESSER FOOT ASSY.	1	0	
A1210-1A	輪錢組	ROLLER PRESSER FOOT ASSY.	0	1	
A1211-0A	輪錢上座	ROLLER PRESSER FOOT SUPPORTING BASE STOPPER	1	1	
A1212-0A	輪錢下座	ROLLER PRESSER FOOT SUPPORTING BASE	1	1	
A1213-0A	輪錢	ROLLER PRESSER FOOT	1	1	
A1218-0A	彈簧	SPRING	1	1	
A1219-0A	彈簧止	SPRING RETAINER	1	0	
A1220-0A	小押腳座	NEEDLE GUIDE HOLDER	0	1	
A1223-0A	小押腳	NEEDLE GUIDE	0	1	
A1225-0A	壓力調節組	PRESSURE ADJUSTING ASSY.	1	0	
A1226-0A	固定銷	SET PIN	1	1	
A1227-0A	彈簧	SPRING	1	1	
A1230-0A	押腳型組	PRESSER FOOT ASSY.	1	0	
A1231-0A	押腳	PRESSER FOOT	1	0	
A1232-1A	押腳座	PRESSER FOOT SUPPORTING BASE	1	0	
A6050-3A	三排針板	NEEDLE PLATE	1	0	
A6050-4A	四排針板	NEEDLE PLATE	1	0	
A6050-5A	四排針板	NEEDLE PLATE	1	0	
A6051-3A	三排狗齒	FEED DOG	1	0	
A6051-4A	四排狗齒	FEED DOG	1	0	
A6051-5A	四排狗齒	FEED DOG	1	0	
WA050004	墊圈	WASHER	1	1	
ZSA15017	螺絲	SCREW (15/64-28x8.5)	1	1	
ZSB08009	螺絲	SCREW (1/8-44x6)	2	2	
ZSB09017	螺絲	SCREW (9/64-40x8)	1	0	
ZSB11016	螺絲	SCREW (11/64-40x6.5)	1	1	
ZSF32002	螺絲	SCREW (1/2-28x41.5)	1	1	
ZSK11005	螺絲	SCREW (11/64-40)	1	1	
ZSL11006	螺絲	SCREW (11/64-40x5.5)	1	1	
ZSA11005	螺絲	SCREW (11/64-40x5.5)	2	2	



# L.CS-810/820 附件 ACCESSORIES

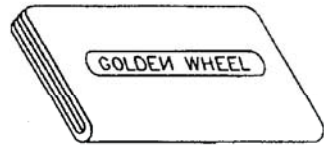


A7000-0A

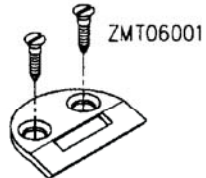


A7021-0A

ZSB15010

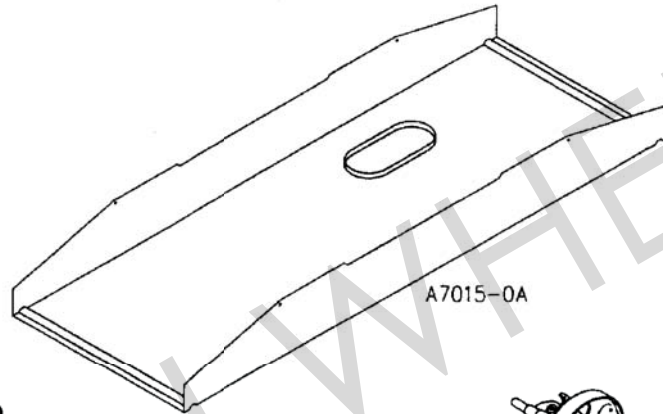


A7001-0A



ZMT06001

A7020-0A



A7015-0A



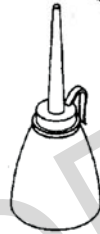
A7025-0A



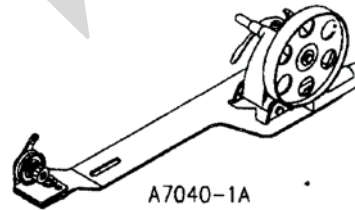
A7026-0A



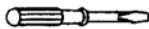
ZMT05001



A7012-1A



A7040-1A



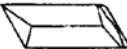
A7006-0A



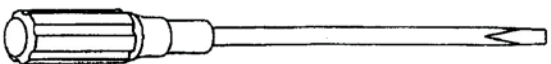
A7011-0A



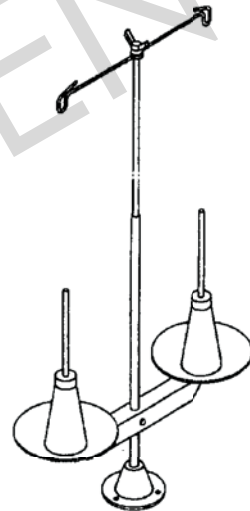
WA059003



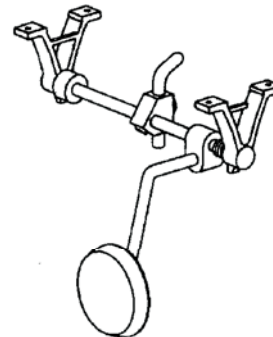
INDP x 5 #16



A7010-0Z



A7050-0A(810)  
A7050-1A(820)



A7030-0A

## L、CS-810/820 附件 ACCESSORIES

零件號碼 Part No	零件名稱	Name of Part	件數 Q'TY		備註 Remarks
			810	820	
A7000-0A	工具袋	ACCESSORY BAG	1	1	
A7001-0A	車頭蓋	VINYL COVER	1	1	
A7006-0A	梭仔	BOBBIN	4	4	
A7010-0Z	螺絲起子組	SCREW DRIVER ASSY.	1	1	
A7011-0A	鐵釘	NAIL	8	8	
A7012-1A	油壺(中)	OILER (MIDDLE)	1	1	
A7015-0A	下油槽	OIL RESERVOIR	1	1	
A7020-0A	半圓形後鈕	HINGE	2	2	
A7021-0A	方形後鈕	HINGE	2	2	
A7025-0A	枕木	MACHINE REST PIN (WOOD)	1	1	
A7026-0A	橡膠墊	VIBRATION PREVENTING RUDDER	4	4	
A7030-0A	腳弓組	KNEE LIFTER ASSY.	1	1	
A7040-1A	捲線器組	BOBBIN WINDER ASSY.	1	1	
A7050-0A	線架組	THREAD STAND	1	0	
A7050-1A	線架組	THREAD STAND	0	1	
INDPx5#16	針	NEEDLE	4	6	
WA059003	平墊圈	WASHER	2	2	
ZMT05001	螺絲	SCREW (4.5x20)	2	2	
ZMT06001	螺絲	SCREW (5.5x25)	4	4	
ZSB15010	螺絲	SCREW (15/64-28x10)	4	4	

M、CS-810/820 零件號碼與頁數對照 NUMERICAL PARTS-LIST

零件號碼 PARTS NO.	頁數 PAGE	零件號碼 PARTS NO.	頁數 PAGE	零件號碼 PARTS NO.	頁數 PAGE	零件號碼 PARTS NO.	頁數 PAGE	零件號碼 PARTS NO.	頁數 PAGE
A1010-0A	2	A1029-1A	4	A1077-0A	6	A1134-0A	20	A1194-0A	12
A1011-0A	2	A1030-0A	4	A1080-0A	6	A1150-0A	10	A1195-0A	12
A1012-0A	2	A1031-0A	4	A1081-0A	6	A1151-0A	10	A1200-0A	12
A1013-0A	2	A1032-0A	4	A1082-0A	6	A1154-0A	10	A1201-0A	12
A1013-1A	2	A1033-0A	4	A1100-0A	8	A1155-0A	10	A1202-0A	12
A1015-0A	2	A1034-0A	4	A1101-0A	6	A1156-0A	10	A1203-0A	12
A1016-0A	2	A1035-0A	4	A1103-0A	8	A1157-0A	10	A1210-0A	12,22
A1016-1A	2	A1036-0A	4	A1104-0A	6	A1158-0A	10	A1210-1A	12,22
A1019-0A	2	A1037-0A	4	A1105-0A	8	A1160-0A	10	A1211-0A	22
A1020-0A	4	A1038-0A	4	A1106-0A	6	A1161-0A	10	A1212-0A	22
A1020-1A	4	A1040-0A	2	A1107-0A	6	A1162-0A	10	A1213-0A	22
A1021-0A	4	A1043-0A	4	A1108-0A	8	A1166-0A	10	A1218-0A	22
A1021-1A	4	A1050-0A	2	A1109-0A	8	A1168-0A	10	A1219-0A	22
A1022-0A	4	A1051-0A	2	A1110-0A	8	A1170-0A	10	A1220-0A	22
A1023-0A	4	A1052-0A	2	A1111-0A	8,14	A1171-0A	10	A1223-0A	22
A1024-0A	4	A1053-0A	2	A1112-0A	8,14	A1172-0B	10	A1225-0A	22
A1024-1A	4	A1055-0A	2	A1113-0A	8,14	A1172-1B	10	A1226-0A	22
A1025-0A	4	A1060-1A	6	A1114-0A	8,14	A1180-0A	12	A1227-0A	22
A1026-0A	4	A1061-0A	6	A1115-0A	8	A1180-1A	12	A1230-0A	22
A1026-1A	4	A1062-0A	6	A1116-0A	8	A1180-2A	12	A1231-0A	22
A1026-2A	4	A1063-0A	2	A1117-0A	8	A1183-0A	12	A1232-1A	22
A1026-3A	4	A1070-0A	6	A1120-0A	8	A1185-0A	12	A4010-0A	14
A1027-0A	4	A1070-1A	6	A1121-4A	8	A1186-0A	12	A4020-0A	8
A1027-1A	4	A1071-0A	6	A1122-0A	8	A1187-0A	12	A4021-0A	8
A1028-0A	4	A1073-0A	6	A1130-0A	8	A1190-0A	12	A4022-0A	20
A1028-1A	4	A1075-0A	6	A1131-0A	20	A1191-0A	12	A4025-0A	16,18
A1028-2A	4	A1075-1A	6	A1132-0A	20	A1192-0A	12	A4026-0A	16,18
A1029-0A	4	A1076-0A	6	A1133-0A	20	A1193-0A	12	A4027-0A	20

M、CS-810/820 零件號碼與頁數對照 NUMERICAL PARTS-LIST

零件號碼 PARTS NO.	頁數 PAGE	零件號碼 PARTS NO.	頁數 PAGE	零件號碼 PARTS NO.	頁數 PAGE	零件號碼 PARTS NO.	頁數 PAGE	零件號碼 PARTS NO.	頁數 PAGE
A4030-1A	14	A6027-0A	18	A7040-1A	24	ZMT05001	24	ZSB11011	2
A4040-0A	14	A6050-0A	18	A7050-0A	24	ZMT06001	24	ZSB11012	2
A4041-0A	14	A6050-1A	16	A7050-1A	24	ZSA11004	2,6,12	ZSB11013	2,20
A4043-0A	14	A6050-2A	16	E1074-0A	6	ZSA11005	4,22	ZSB11014	6,18
A4045-0A	14	A6050-3A	22	E1184-0A	12	ZSA11006	12	ZSB11015	10,14
A4046-0A	14	A6050-4A	22	E4043-0A	14	ZSA11007	14	ZSB11016	16,18
A4047-0A	14	A6050-5A	22	E4044-0A	14	ZSA11008	16,18	ZSB11017	12,14,18
A4050-0A	14	A6051-0A	18	INDPx5#16	6,24	ZSA15004	14	ZSB11019	14
A4051-0A	14	A6051-1A	16	Q4035-0A	14	ZSA15016	12	ZSB11020	16,18
A4052-0A	14	A6051-3A	22	Q4047-1A	8	ZSA15017	4,6,8,12,22	ZSB11016	22
A4052-1A	14	A6051-4A	22	RB200200	8	ZSA15018	6,8,14,10	ZSB12006	10
A4115-0A	10	A6051-5A	22	RE000050	14	ZSA15019	6	ZSB12011	10
A4435-1A	14	A6052-0A	16,18	WA059003	24	ZSA15020	6	ZSB15007	8,10
A6000-0A	16,18	A6053-0A	16,18	WB061001	16	ZSA15021	8,14	ZSB15008	10
A6001-0A	18	A6054-0A	16,18	WB081001	16,18	ZSA15023	14	ZSB15010	24
A6001-1A	16	A6100-0A	16,18	WG000010	10	ZSA16010	16,18	ZSB15011	20
A6010-0A	16,18	A7000-0A	24	XA300020	6	ZSA16012	14	ZSB15014	14
A6013-0A	16,18	A7001-0A	24	XA300035	20	ZSB06003	4	ZSB15019	10,14
A6014-0A	16,18	A7006-0A	16,18,24	XA300065	6	ZSB08002	6	ZSB15026	8
A6015-0A	16,18	A7010-0Z	24	XA500150	20	ZSB08007	6	ZSB16003	16
A6016-0A	16,18	A7011-0A	24	XB108002	6	ZSB08008	6	ZSB18001	6
A6020-0C	16,18	A7012-1A	24	XB109001	16,18	ZSB08009	22	ZSB18002	6
A6021-0A	18	A7015-0A	24	XB205001	8,14	ZSB09011	2,16,18	ZSB20004	16,18
A6022-0A	16	A7020-0A	24	XB207001	8	ZSB09012	2	ZSB22001	8
A6023-0A	16	A7021-0A	24	XB207002	8	ZSB09013	4	ZSC09006	16,18,20
A6024-0A	18	A7025-0A	24	XB210001	6,8	ZSB09015	16,18	ZSC09007	16,18
A6025-0A	16	A7026-0A	24	XB216001	20	ZSB09017	22	ZSB22001	8
A6026-0A	18	A7030-0A	24	XB320001	20	ZSB09019	6	ZSC09006	16,18,20

M、CS-810/820 零件號碼與頁數對照 NUMERICAL PARTS-LIST

零件號碼 PARTS NO.	頁數 PAGE	零件號碼 PARTS NO.	頁數 PAGE	零件號碼 PARTS NO.	頁數 PAGE	零件號碼 PARTS NO.	頁數 PAGE	零件號碼 PARTS NO.	頁數 PAGE
ZSC11002	16,18								
ZSD15003	10								
ZSF09002	2								
ZSF32001	12								
ZSF32002	22								
ZSG09003	2								
ZSG09004	4								
ZSG09005	4								
ZSG11003	16,18								
ZSG12006	12								
ZSG12007	16,18								
ZSG15003	12								
ZSG18002	16,18								
ZSG20003	12								
ZSH15002	6								
ZSH16001	8,16,18								
ZSK11005	22								
ZSL09001	4								
ZSL11004	16,18								
ZSL11006	22								
ZSL12002	12,16,18								
ZSN16001	4								
ZSN16002	4								