

NO : CS-2390A02

金輪牌工業用縫紉機

GOLDEN WHEEL INDUSTRIAL SEWING MACHINE

零件分解圖

PARTS BOOK

MODEL:CS-2390
CS-2391

啓翔股份有限公司
CHEE SIANG INDUSTRIAL CO., LTD.

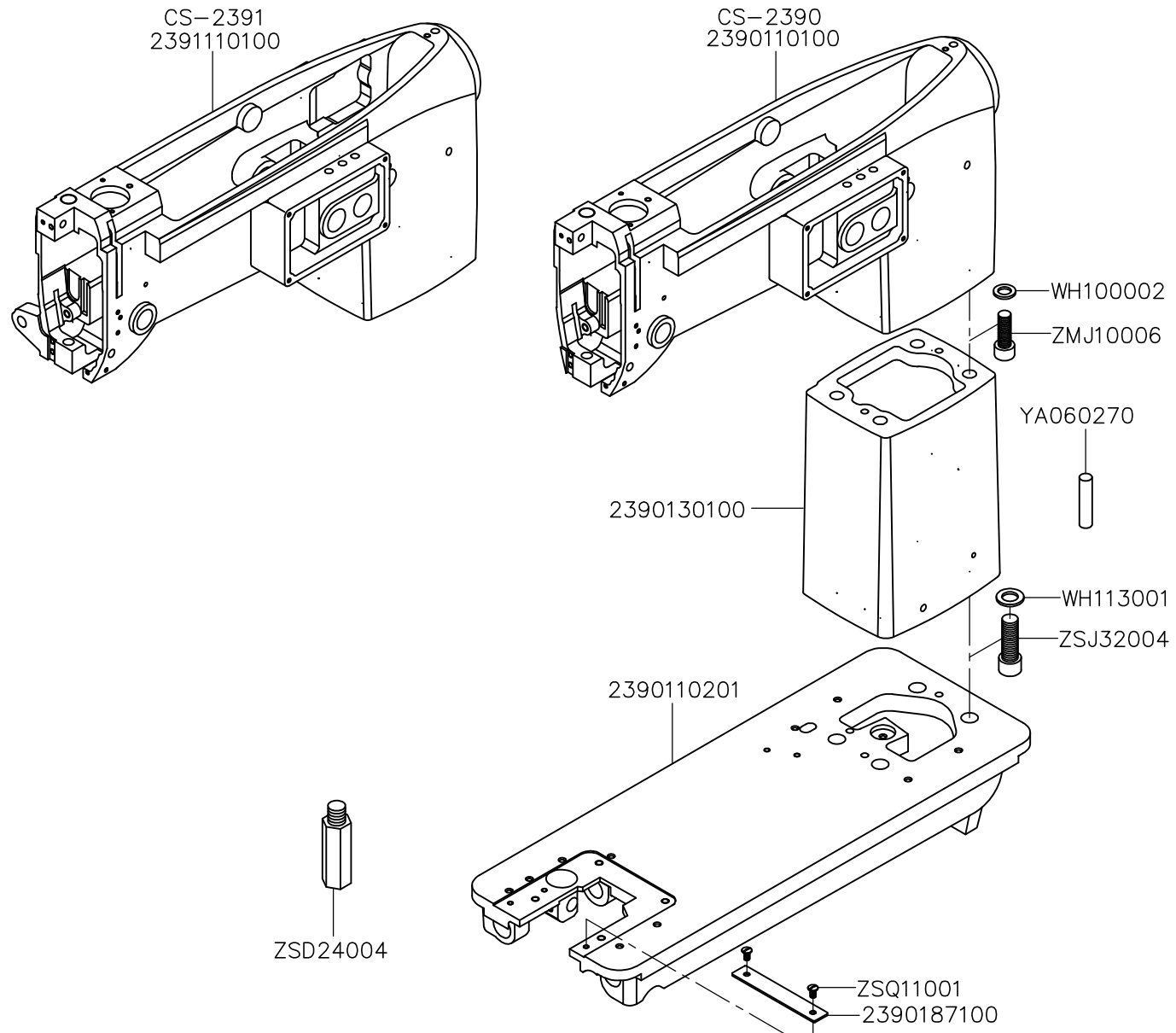
MODEL : CS-2390、2391

索引	INDEX	PAGE
A、本體關係(一) -----	FRAME & MISCELLANEOUS COVER COMPONENTS -----	2-3
B、本體關係(二) -----	FRAME & MISCELLANEOUS COVER COMPONENTS -----	4-5
C、上軸、豎軸關係 -----	MAIN SHAFT & UPRIGHT SHAFT COMPONENTS -----	6-7
D、針棒、天秤關係 -----	NEEDLE BAR & TREAD TAKE-UP LEVER COMPONENTS -----	8-9
E、送料關係(一) -----	FEED MECHANISM COMPONENTS -----	10-11
F、送料關係(二) -----	FEED MECHANISM COMPONENTS -----	12-13
G、中座機構 -----	CENTRAL BRACKET MECHANISM -----	14-15
H、押腳關係(一) -----	PRESSER BAR & KNEE LIFTER COMPONENTS -----	16-17
I、押腳關係(二) -----	PRESSER BAR & KNEE LIFTER COMPONENTS -----	18-19
J、附件(一) -----	ACCESSORIES (一) -----	20-21
K、附件(二) -----	ACCESSORIES (二) -----	22-23
L、零件號碼與頁數對照 --	NUMERICAL PARTS-LIST -----	24-25

A、CS-2390、2391 本體關係(一) FRAME & MISCELLANEOUS COVER COMPONENTS

零件號碼 Part No	零件名稱 Name of Part	件數 Q, TY		零件號碼 Part No	零件名稱 Name of Part	件數 Q, TY	
		2390	2391			2390	2391
2390111100	側板----- ARM SIDE COVER -----	1	0	YD060050	彈簧銷----- SPRING PIN-----	2	2
A1021-0A	調整彈簧--- TENSION SPRING -----	1	1	ZMJ06008	螺絲----- SCREW M6-1.0*12-----	0	2
A1025-0A	壓線盤----- TENSION DISK -----	2	2	ZSA11005	螺絲----- SCREW 11/64-40*5.5-----	1	1
A1034-0A	線調整壓盤 TENSION RELEASE WASHER-----	1	1	ZSA15006	螺絲----- SCREW 15/64-28*12-----	1	1
A1051-0A	三孔線掛--- THREE HOLE THREAD EYELET----	1	1	ZSB09002	螺絲----- SCREW 9/64-40*10-----	2	2
E1052-0A	線掛----- THREAD GUIDE-----	1	1	ZSB09047	螺絲----- SCREW 9/64-40*7-----	4	5
PA1052-0A	線掛----- ARM THREAD GUIDE-----	2	2	ZSB09079	螺絲----- SCREW 9/64-40*7-----	4	4
S1055-0A	線掛----- TENSION POST THREAD GUIDE----	1	1	ZSB09080	螺絲----- SCREW 9/64-40*12-----	2	2
SB1010-0A	面板蓋----- FACE PLATE-----	1	1	ZSB12005	螺絲----- SCREW 3/16-28*15-----	2	2
SB1012-0A	側板(B)---- ARM SIDE COVER(LARGE)-----	0	1	ZSB12061	螺絲----- SCREW 3/16-28*18-----	2	2
SB1013-0A	側板(A)---- ARM SIDE COVER(SMALL)-----	0	1	ZSL09002	螺帽----- NUT9/64-40-----	2	2
SB1014-0A	擋塊----- BLOCK-----	1	1	ZSN16006	螺絲----- NUT1/4-40-----	1	1
SB1020-0A	壓線調整組 THREAD TENSION SET-----	1	1	ZSQ09008	螺絲----- SCREW9/64-40*6-----	3	3
SB1026-0A	調整螺絲棒 TENSION POST-----	1	1				
SB1027-0A	吊線彈簧--- TAKE UP SPRING-----	1	1				
SB1028-0A	鬆線銷----- TENSION RELEASE PIN-----	1	1				
SB1029-0A	彈簧座----- TENSION POST ROCKET-----	1	1				
SB1050-0A	線掛----- THREAD GUIDE-----	1	1				
SB1062-0A	天秤蓋----- BALANCE CRANK COVER-----	1	1				
SB1279-0A	上部舉升軸 BLOCK-----	0	1				
SB1320-0A	上油槽組--- OIL TANK-----	1	1				
SB1321-0A	油棉蓋----- OIL TANK COVER-----	1	1				
SB1322-0A	油槽蓋----- OIL TANK COVER-----	1	1				
SB1360-0A	上蓋----- TOP COVER-----	1	1				
XB132001	油棉----- OIL FELT-----	1	1				
XB333001	油棉----- OIL FELT-----	1	1				
YB030016	銷----- PIN-----	0	1				

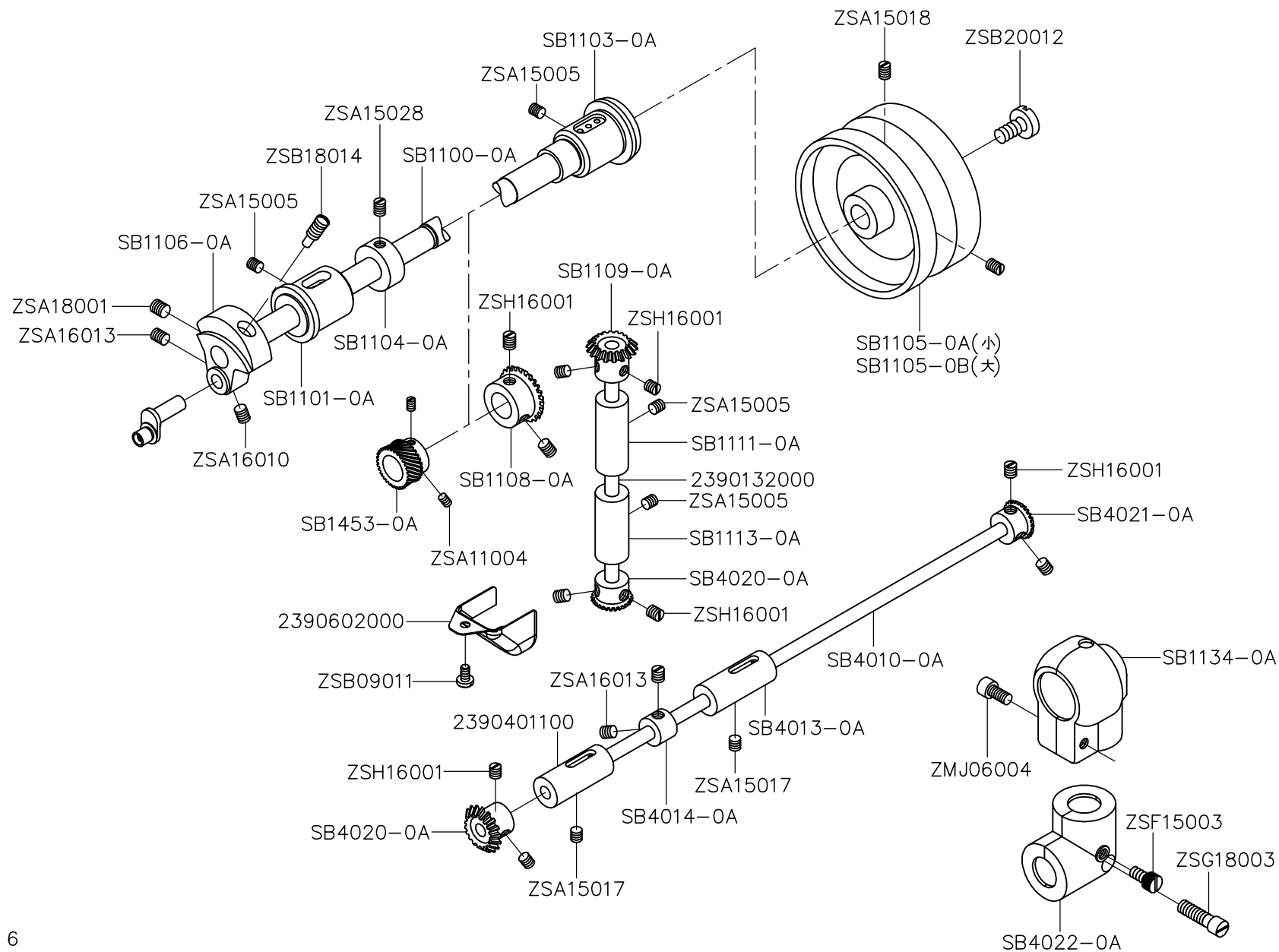
B. CS-2390.2391 本體關係(二) FRAME & MISCELLANEOUS COVER COMPONENTS



B、CS-2390、2391 本體關係(二) FRAME & MISCELLANEOUS COVER COMPONENTS

零件號碼 Part No	零件名稱	Name of Part	件數 Q, TY		零件號碼 Part No	零件名稱	Name of Part	件數 Q, TY	
			2390	2391				2390	2391
2390110100	車頭-----	ARM-----	1	0					
2390110201	低座-----	BED-----	1	1					
2390130100	中筒-----	POST-----	1	1					
2390187100	蓋-----	COVER-----	1	1					
2391110100	車頭-----	ARM-----	0	1					
WH100002	墊圈-----	WASHER-----	4	4					
WH113001	墊圈-----	WASHER-----	4	4					
YA060270	平行銷-----	PIN-----	2	2					
ZMJ10006	螺絲-----	SCREW 3/16-28*18-----	4	4					
ZSD24004	螺絲-----	SCREW 3/8-16*10-----	1	1					
ZSJ32004	螺絲-----	SCREW 1/2-12*38-----	4	4					
ZSQ11001	螺絲-----	SCREW 11/64-40*8-----	2	2					

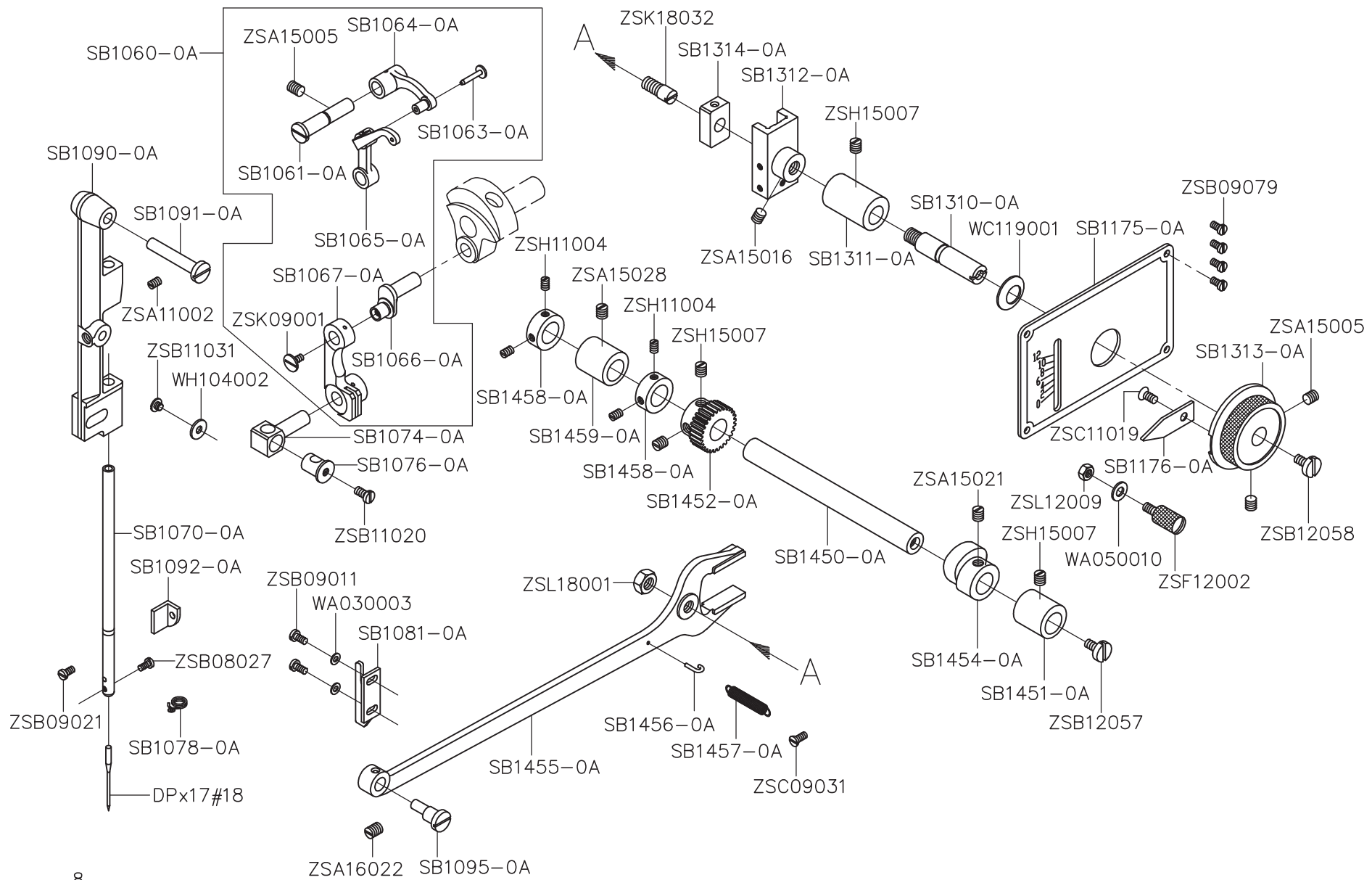
C.CS-2390.2391 上軸、豎軸關係 MAIN SHAFT & UPRIGHT SHAFT COMPONENTS



C、CS-2390、2391 上軸、豎軸關係 MAIN SHAFT & UPRIGHT SHAFT COMPONENTS

零件號碼	零件名稱	Name of Part	件數 Q, TY		零件號碼	零件名稱	Name of Part	件數 Q, TY	
Part No			2390	2391	Part No			2390	2391
2390132000	豎軸 -----	UPRIGHT SHAFT -----	1	1	ZMJ06004	螺絲 -----	SCREW (M6-1.0x20) -----	1	1
2390401100	下軸套管 ----	LOWER SHAFT BUSHING -----	1	1	ZSA11004	螺絲 -----	SCREW (SM11/64-40x3.5) -----	2	2
2390602000	齒輪蓋 -----	GEAR COVER -----	1	1	ZSA15005	螺絲 -----	SCREW (SM15/64-28x13) -----	4	4
SB1100-0A	上軸 -----	ARM SHAFT -----	1	1	ZSA15017	螺絲 -----	SCREW (SM15/64-28x8.5) -----	2	3
SB1101-0A	大心套管(前)---	ARM BUSHING (FRONT) -----	1	1	ZSA15018	螺絲 -----	SCREW (SM15/64-28x19) -----	2	2
SB1103-0A	大心套管(後)---	ARM SHAFT BUSHING -----	1	1	ZSA15028	螺絲 -----	SCREW (SM15/64-28x7) -----	2	2
SB1104-0A	定環 -----	ARM SHAFT COLLAR -----	1	1	ZSA16010	螺絲 -----	SCREW (SM1/4-40x4.5) -----	1	1
SB1105-0A	皮帶輪 -----	HAND WHEEL -----	1	1	ZSA16013	螺絲 -----	SCREW (SM1/4-40x5.5) -----	3	3
SB1105-0B	皮帶輪 -----	HAND WHEEL -----	1	1	ZSA18001	螺絲 -----	SCREW (9/32-28x8) -----	1	1
SB1106-0A	凸輪 -----	COUNTER WEIGHT -----	1	1	ZSB09011	螺絲 -----	SCREW (SM9/64-40x6.5) -----	1	1
SB1108-0A	大心傘齒輪 --	ARM SHAFT LEVER GEAR-----	1	1	ZSB18014	螺絲 -----	SCREW (SM9/32-28x17) -----	1	1
SB1109-0A	豎軸傘齒輪 --	PINION -----	1	1	ZSB20012	螺絲 -----	SCREW (SM5/16-24x13) -----	1	1
SB1111-0A	套管(上) -----	UPRIGHT BUSHING (UPPER)---	1	1	ZSF15003	螺絲 -----	SCREW (SM15/64-28x3) -----	1	1
SB1113-0A	套管(下) -----	UPRIGHT BUSHING (LOWER)---	1	1	ZSG18003	螺絲 -----	SCREW (SM9/32-20x18) -----	1	1
SB1134-0A	油套組 -----	HAND GEAR AND PINION -----	1	1	ZSH16001	螺絲 -----	SCREW (SM1/4-40x6) -----	10	10
SB1453-0A	針振齒輪(小) -	NEEDLE VIBRATION PINION----	1	1					
SB4010-0A	下軸 -----	HOOK DRIVE SHAFT -----	1	1					
SB4013-0A	下軸套管(後)---	LOWER SHAFT REAR METAL---	1	1					
SB4014-0A	定環 -----	COLLAR -----	1	1					
SB4020-0A	豎軸傘齒輪 --	UPRIGHT MITER GEAR -----	2	2					
SB4021-0A	齒輪 -----	GEAR -----	1	1					
SB4022-0A	下軸齒輪蓋----	MITER GEAR CASE -----	1	1					

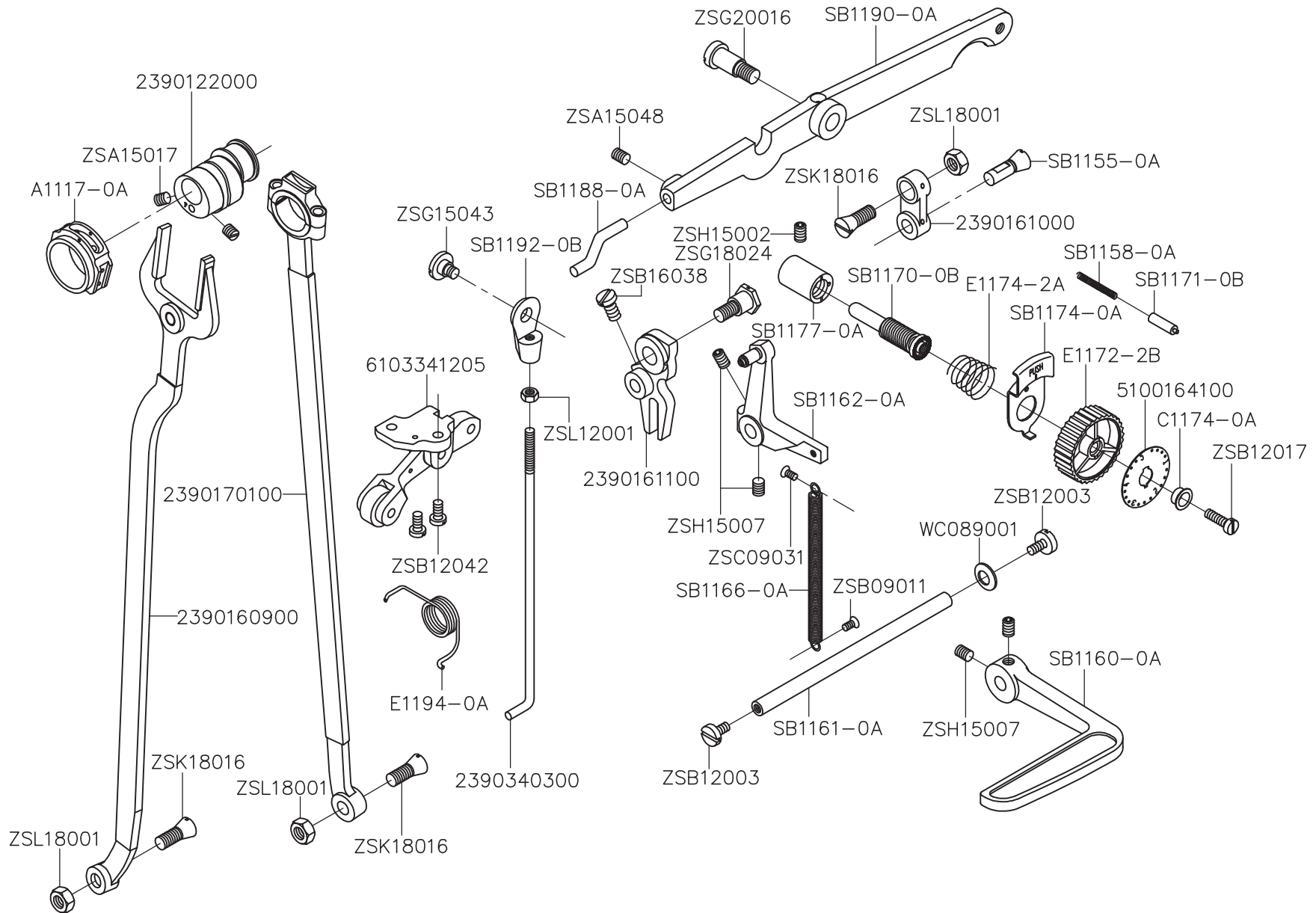
D.CS-2390.2391 針棒、天秤關係 NEEDLE BAR & TREAD TAKE-UP LEVER COMPONENTS



D、CS-2390、2391 針棒、天秤關係 NEEDLE BAR & TREAD TAKE-UP LEVER COMPONENTS

零件號碼 Part No	零件名稱 Name of Part	件數 Q, TY		零件號碼 Part No	零件名稱 Name of Part	件數 Q, TY			
		2390	2391			2390	2391		
DPx17#18	針 -----	NEEDLE -----	1	1	SB1458-0A	定環 -----	ZIGZAG COLLAR -----	2	2
SB1060-0A	天秤組 -----	BALANCE ASM. -----	1	1	SB1459-0A	凸輪軸套管(後)	ZIGZAG BUSHING REAR ----	1	1
SB1061-0A	天秤固定銷	TAKE-UP LEVER LINK -----	1	1	WA030003	墊圈 -----	WASHER -----	2	2
SB1063-0A	天秤鉚釘 ---	BALANCE CRANK PIN -----	1	1	WA050010	平盤圈 -----	WASHER -----	2	2
SB1064-0A	天秤架 -----	BALANCE CRANK BRACKET -----	1	1	WC119001	盤形墊圈-----	SPRING WASHER -----	1	1
SB1065-0A	天秤 -----	BALANCE ASM. -----	1	1	WH104002	墊圈 -----	NEEDLE WASHER -----	1	1
SB1066-0A	針棒連結軸	NEEDLE BAR CRANK -----	1	1	ZSA11002	螺絲 -----	SCREW (SM11/64-40x6.5) ----	1	1
SB1067-0A	針棒連結桿	NEEDLE BAR CRANK ROD -----	1	1	ZSA15005	螺絲 -----	SCREW (SM15/64-28x13) ----	3	3
SB1070-0A	針棒 -----	NEEDLE BAR -----	1	1	ZSA15016	螺絲 -----	SCREW (SM15/64-28x7) ----	1	1
SB1074-0A	針棒鉗 -----	NEEDLE BUSHING -----	1	1	ZSA15021	螺絲 -----	SCREW (SM15/64-28x4.5) ----	1	1
SB1076-0A	針棒鉗固定	NEEDLE BAR BRACKET -----	1	1	ZSA15028	螺絲 -----	SCREW (SM15/64-28x7) ----	1	1
SB1078-0A	線掛 -----	THREAD GUIDE -----	1	1	ZSA16022	螺絲 -----	SCREW (SM1/4-40x7) ----	1	1
SB1081-0A	固定板 -----	GUIDE PLATE-----	1	1	ZSB08027	螺絲 -----	SCREW (SM1/8-40x4.5) ----	1	1
SB1090-0A	針柱座 -----	NEEDLE BAR FRAME -----	1	1	ZSB09011	螺絲 -----	SCREW (SM9/64-40x6.5) ----	2	2
SB1091-0A	針柱座固定	NEEDLE HINGE PIN -----	1	1	ZSB09021	螺絲 -----	SCREW (SM9/64-40x7.7) ----	1	1
SB1092-0A	針柱座定位	NEEDLE BAR FRAME POSITION PLATE	1	1	ZSB09079	螺絲 -----	SCREW (SM9/64-40x7) ----	4	4
SB1095-0A	針落調整螺	ECCENTRIC STUD -----	1	1	ZSB11020	螺絲 -----	SCREW (SM11/64-40x6.5) ----	1	1
SB1175-0A	針振目盛板	ZIGZAG INDICATOR PLATE -----	1	1	ZSB11031	螺絲 -----	SCREW (SM11/64-40x3.2) ----	1	1
SB1176-0A	針振指針 ---	NEEDLE VIBRATOR STOP INDEX	1	1	ZSB12057	螺絲 -----	SCREW (SM3/16-28x9.5) ----	1	1
SB1310-0A	針振調整軸	ZIGZAG REGULATOR CRANK -----	1	1	ZSB12058	螺絲 -----	SCREW (SM3/16-32x6.5) ----	1	1
SB1311-0A	套管 -----	ZIGZAG REGULATOR BUSHING ----	1	1	ZSC09031	螺絲 -----	SCREW (SM9/64-40x11) ----	1	1
SB1312-0A	針振調節器	ZIGZAG REGULATOR -----	1	1	ZSC11019	螺絲 -----	SCREW (SM11/64-40x5.5) ----	2	2
SB1313-0A	旋鈕 -----	DIAL -----	1	1	ZSF12002	螺絲 -----	SCREW (SM3/16-32x10) ----	2	2
SB1314-0A	滑塊 -----	ZIGZAG SLIDE BLOCK -----	1	1	ZSH11004	螺絲 -----	SCREW (SM11/64-40x5) ----	4	4
SB1450-0A	針振驅動組	ZIGZAG DRIVE CAM -----	1	1	ZSH15007	螺絲 -----	SCREW (SM15/64-28x8) ----	2	2
SB1451-0A	凸輪軸套管	CAM SHAFT BUSHING (FRONT) ---	1	1	ZSK09001	螺絲 -----	SCREW (SM9/64-40) -----	1	1
SB1452-0A	針振齒輪(大)	ZIGZAG BEVEL GEAR -----	1	1	ZSK18032	螺絲 -----	SCREW (SM9/32-28) -----	1	1
SB1454-0A	凸輪 -----	NEEDLE VIBRATING CAM -----	1	1	ZSL12009	螺帽 -----	NUT (SM3/16-32) -----	2	2
SB1455-0A	針振三叉 ---	ZIGZAG DRIVE FORK -----	1	1	ZSL18001	螺帽 -----	NUT (SM9/32-28) -----	1	1
SB1456-0A	彈簧掛勾 ---	ZIGZAG SPRING HOOK -----	1	1					
SB1457-0A	拉伸彈簧 ---	ZIGZAG SPRING (SMALL) -----	1	1					

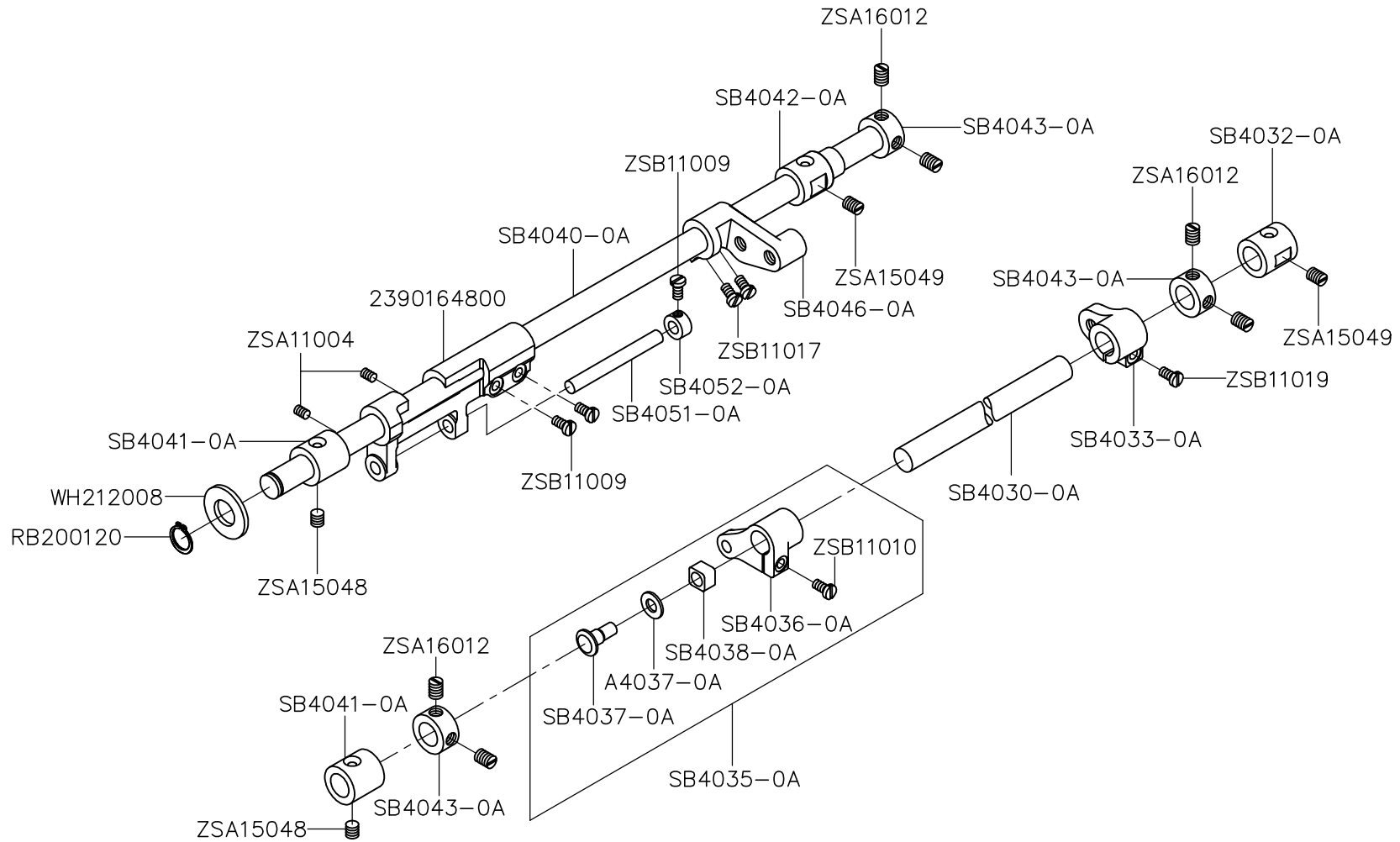
E.CS-2390.2391 送料關係(一) FEED MECHANISM COMPONENTS



E、CS-2390、2391 送料關係(一) FEED MECHANISM COMPONENTS

零件號碼 Part No	零件名稱 Name of Part	件數 Q, TY		零件號碼 Part No	零件名稱 Name of Part	件數 Q, TY	
		2390	2391			2390	2391
2390122000	偏心輪----- FEED CAM -----	1	1	WC089001	盤形墊圈 ---- SPRING WASHER -----	2	2
2390160900	連結叉桿 -- FEED FORKED CONNECTION -----	1	1	ZSA15017	螺絲 ----- SCREW (SM15/64-28x8.5) -----	2	2
2390161000	二又連桿 -- FEED CONNECTING LINK -----	1	1	ZSA15048	螺絲 ----- SCREW (SM15/64-28x28) -----	1	1
2390161100	送料調節器 FEED REGULATOR (FORKED) -----	1	1	ZSB09011	螺絲 ----- SCREW (SM9/64-40x6.5) -----	1	1
2390170100	送料桿 --- FEED LIFTING ROD-----	1	1	ZSB12003	螺絲 ----- SCREW (SM3/16-32x6.5) -----	2	2
2390340300	連接棒 --- KNEE LIFTER ROD -----	1	1	ZSB12017	螺絲 ----- SCREW (SM3/16-28x15) -----	1	1
5100164100	刻度盤 --- LENGTH CONTROL PLATE -----	1	1	ZSB12042	螺絲 ----- SCREW (SM3/16-28x8) -----	2	2
6103341205	砲台組 --- KNEE LIFTER BELL CRANK -----	1	1	ZSB16038	螺絲 ----- SCREW (SM1/4-40x10) -----	1	1
A1117-0A	偏心輪環--- CAM RETAINER-----	1	1	ZSC09031	螺絲 ----- SCREW (SM9/64-40x11) -----	1	1
C1174-0A	墊片 ----- WASHER -----	1	1	ZSG15043	螺絲 ----- SCREW (SM15/64-28x5.2) -----	1	1
E1172-2B	刻度盤 ----- FEED REGULATING STUD HEAD ----	1	1	ZSG18024	螺絲 ----- SCREW (SM9/32-28x11) -----	1	1
E1174-2A	壓縮彈簧 -- SPRING -----	1	1	ZSG20016	螺絲 ----- SCREW (SM5/16-24x11) -----	1	1
E1194-0A	扭轉彈簧 -- BELL CRANK SPRING -----	1	1	ZSH15002	螺絲 ----- SCREW (SM15/64-28x8) -----	1	1
SB1155-0A	連結軸 ----- HINGE STUD -----	1	1	ZSH15007	螺絲 ----- SCREW (SM15/64-28x8) -----	4	4
SB1158-0A	壓縮彈簧 -- FEED SPRING -----	1	1	ZSK18016	螺絲 ----- SCREW (SM9/32-28) -----	3	3
SB1160-0A	倒縫槓桿 -- FEED CONTROL LEVER -----	1	1	ZSL12001	螺帽 ----- NUT (SM3/16-32) -----	1	1
SB1161-0A	連結軸 ----- CONTROL LEVER SHAFT-----	1	1	ZSL18001	螺帽 ----- NUT (SM9/32-28) -----	3	3
SB1162-0A	倒縫曲柄組 REVERSE FEED CRANK-----	1	1				
SB1166-0A	拉伸彈簧 -- FEED REVERSE SPRING -----	1	1				
SB1170-0B	調節螺絲 -- FEED REGULATING STUD -----	1	1				
SB1171-0B	定位銷 --- FEED REGULATING STUD LOCK PIN	1	1				
SB1174-0A	操作板 --- STOPPER PIN RELEASING LEVER ---	1	1				
SB1177-0A	調節螺絲套 FEED REGULATING STUD BUSHING	1	1				
SB1188-0A	連接板銷 -- KNEE LIFTER LIFTING LEVER PIN --	1	1				
SB1190-0A	押棒提升桿 KNEE LIFTER LIFTING LEVER -----	1	1				
SB1192-0B	提升桿接頭 CONNECTING ROD JOINT-----	1	1				

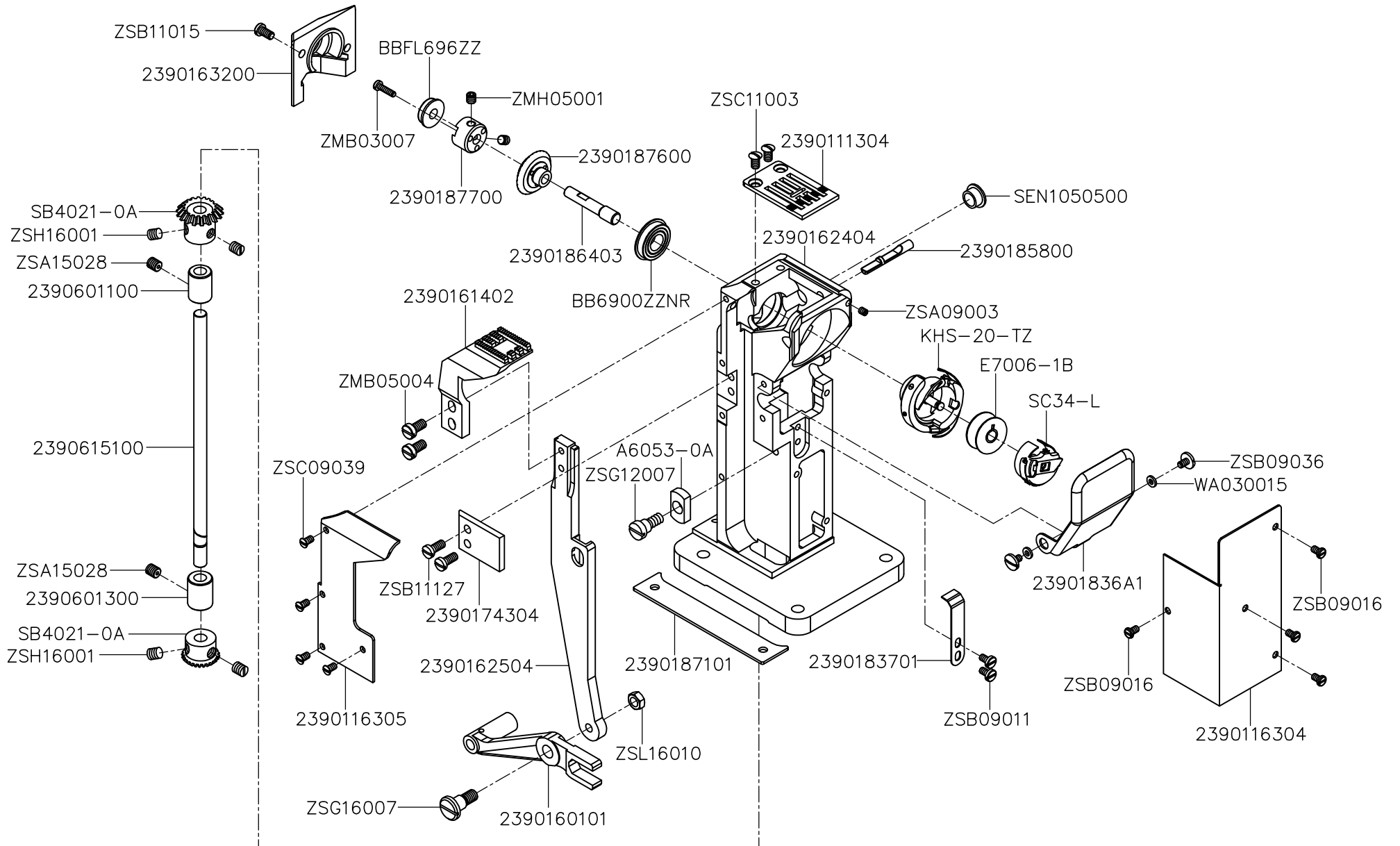
F.CS-2390.2391 送料關係(二) FEED MECHANISM COMPONENTS



F、CS-2390、2391 送料關係(二) FEED MECHANISM COMPONENTS

零件號碼	零件名稱	Name of Part	件數 Q, TY		零件號碼	零件名稱	Name of Part	件數 Q, TY	
Part No			2390	2391	Part No			2390	2391
2390164800	送料台連桿	FEED BAR ROD	1	1					
A4037-0A	墊片	WASHER	1	1					
RB200120	軸用 C 扣環	C RING	1	1					
SB4030-0A	搖動軸	FEED LIFTING ROCK SHAFT	1	1					
SB4032-0A	套環	BUSHING	1	1					
SB4033-0A	送料腕	FEED LIFTING ROCK LINK	1	1					
SB4035-0A	上下送料曲	FEED CRANK ASM.	1	1					
SB4036-0A	送料軸座	FEED ROCK SHAFT SET	1	1					
SB4037-0A	固定軸	BRACKET SHAFT	1	1					
SB4038-0A	送料滑塊	ZIGZAG SLIDE BLOCK	1	1					
SB4040-0A	水平送料軸	FEED ROCK SHAFT	1	1					
SB4041-0A	套環	BUSHING	2	2					
SB4042-0A	套環	BUSHING	1	1					
SB4043-0A	定環	COLLAR	3	3					
SB4046-0A	送料曲柄	FEED ROCK SHAFT CRANK	1	1					
SB4051-0A	送料台軸	FEED BAR SHAFT	1	1					
SB4052-0A	定環	FEED BAR SHAFT COLLAR	1	1					
WH212008	研磨墊圈	WASHER	1	1					
ZSA11004	螺絲	SCREW (SM11/64-40x3.5)	2	2					
ZSA15048	螺絲	SCREW (SM15/64-28x28)	2	2					
ZSA15049	螺絲	SCREW (SM15/64-28x28)	2	2					
ZSA16012	螺絲	SCREW (SM1/4-40x4)	6	6					
ZSB11009	螺絲	SCREW (SM11/64-40x5)	3	3					
ZSB11010	螺絲	SCREW (SM11/64-40x14)	1	1					
ZSB11017	螺絲	SCREW (SM11/64-40x12)	2	2					
ZSB11019	螺絲	SCREW (SM11/64-40x13)	1	1					

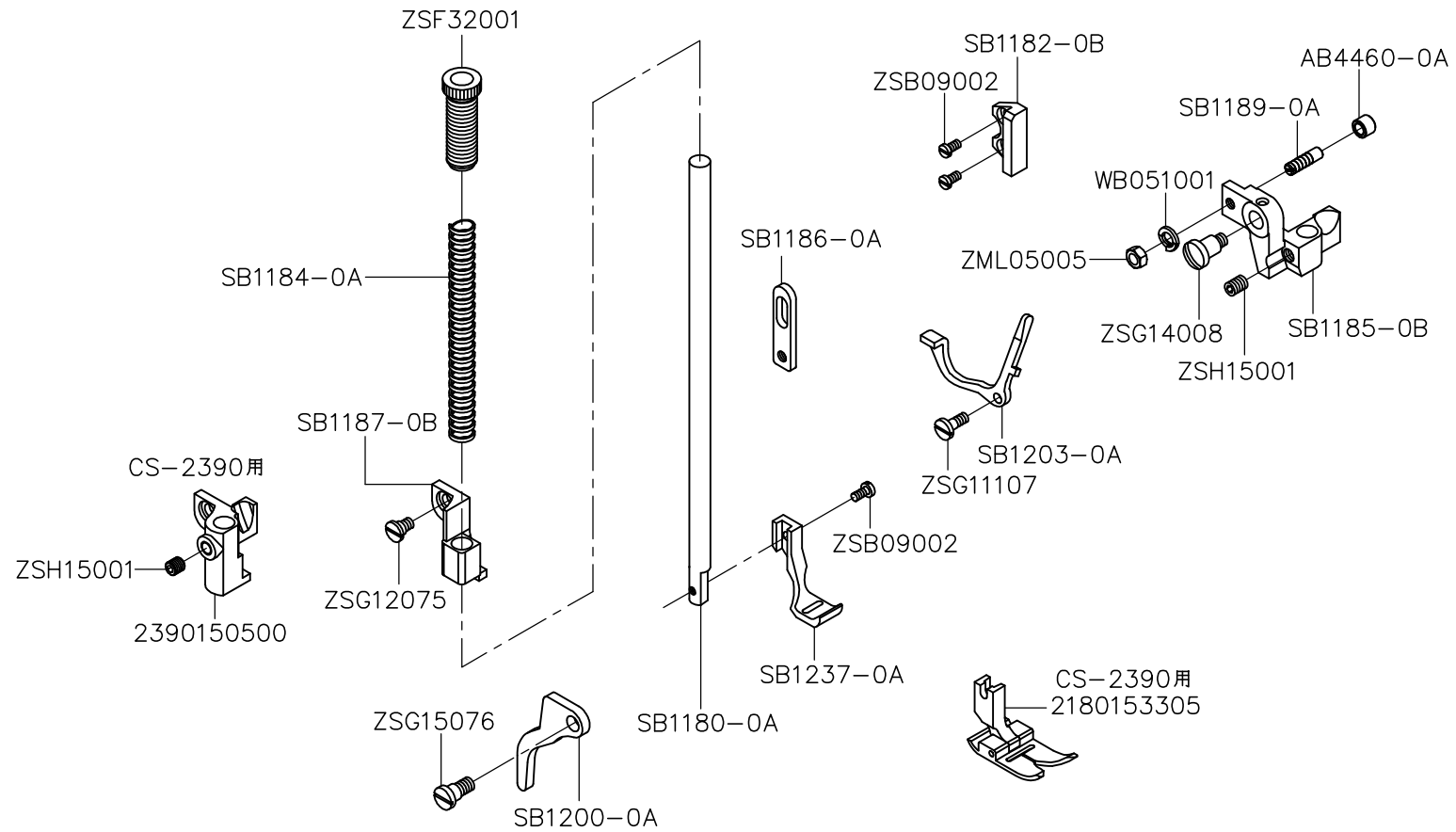
G. CS-2390.2391 中座機構 CENTRAL BRACKET MECHANISM



G、CS-2390、2391 中座機構 CENTRAL BRACKET MECHANISM

零件號碼 Part No	零件名稱 Name of Part	件數 Q, TY		零件號碼 Part No	零件名稱 Name of Part	件數 Q, TY			
		2390	2391			2390	2391		
2390111304	針板 -----	THROAT PLATE-----	1	1	WA030015	平墊圈-----	WASHER -----	1	1
2390116304	釜軸台蓋板	COVER -----	1	1	ZMB03007	螺絲-----	SCREW(M3-0.5x12)-----	3	3
2390116305	送料齒蓋板	COVER-----	1	1	ZMB05004	螺絲-----	SCREW(M5-0.8x10)-----	2	2
2390160101	送料台連桿	FEED BAR ROD -----	1	1	ZMH05001	螺絲-----	SCREW(M5-0.8x5)-----	2	2
2390161402	送料齒 -----	FEED DOG -----	1	1	ZSA09003	螺絲-----	SCREW(9/64-40x8.5)-----	1	1
2390162404	釜軸台 -----	HOOK SHAFT PLATE -----	1	1	ZSA15028	螺絲-----	SCREW(15/64-28x7)-----	2	2
2390162504	送料齒台 --	FEED DOG PLATE -----	1	1	ZSB09011	螺絲-----	SCREW(9/64-40x6.5)-----	2	2
2390163200	釜軸台後蓋	COVER -----	1	1	ZSB09016	螺絲-----	SCREW(9/64-40x6.5)-----	4	4
2390174304	送料台壓板	HOLDER PLATE -----	1	1	ZSB09036	螺絲-----	SCREW(9/64-40x6)-----	2	2
23901836A1	釜蓋 -----	BOBBIN CASE -----	1	1	ZSB11015	螺絲-----	SCREW(11/64-40x8.5)-----	2	2
2390183701	釜蓋彈簧板	SPRING PLATE-----	1	1	ZSB11127	螺絲-----	SCREW(11/64-40x10.5)-----	2	2
2390185800	釜擋 -----	POSITIONING FINGER -----	1	1	ZSC09039	螺絲-----	SCREW(9/64-40x7)-----	4	4
2390186403	釜軸 -----	HOOK SHAFT -----	1	1	ZSC11003	螺絲-----	SCREW(11/64-40x6.5)-----	2	2
2390187101	底座蓋板 --	COVER-----	1	1	ZSG12007	螺絲-----	SCREW(3/16-32)-----	1	1
2390187600	釜軸齒輪 --	GEAR-----	1	1	ZSG16007	螺絲-----	SCREW(1/4-24x10)-----	1	1
2390187700	齒輪固定環	COLLAR-----	1	1	ZSH16001	螺絲-----	SCREW(1/4-40x6)-----	4	4
2390601100	釜軸上套管	UPPER BUSHING -----	1	1	ZSL16010	螺帽-----	NUT-----	1	1
2390601300	釜軸下套管	LOWER BUSHING-----	1	1					
2390615100	釜台豎軸 --	UPRIGHT SHAFT -----	1	1					
A6053-0A	送料齒板滑	SQUARE BLOCK -----	1	1					
BB6900ZZNR	軸承 -----	BEARING -----	1	1					
BBFL696ZZ	滾珠軸承 --	BALL BEARING -----	1	1					
E7006-1B	梭仔 -----	BOBBIN -----	1	1					
KHS-20-TZ	釜-----	HOOK ASM-----	1	1					
SB4021-0A	下軸傘齒輪-	LOWER SHAFT MITER GEAR---	2	2					
SC34-L	釜蓋 -----	BOBBIN CASE ASM.-----	1	1					
SEN1050500	油封 -----	OIL SEAL -----	1	1					

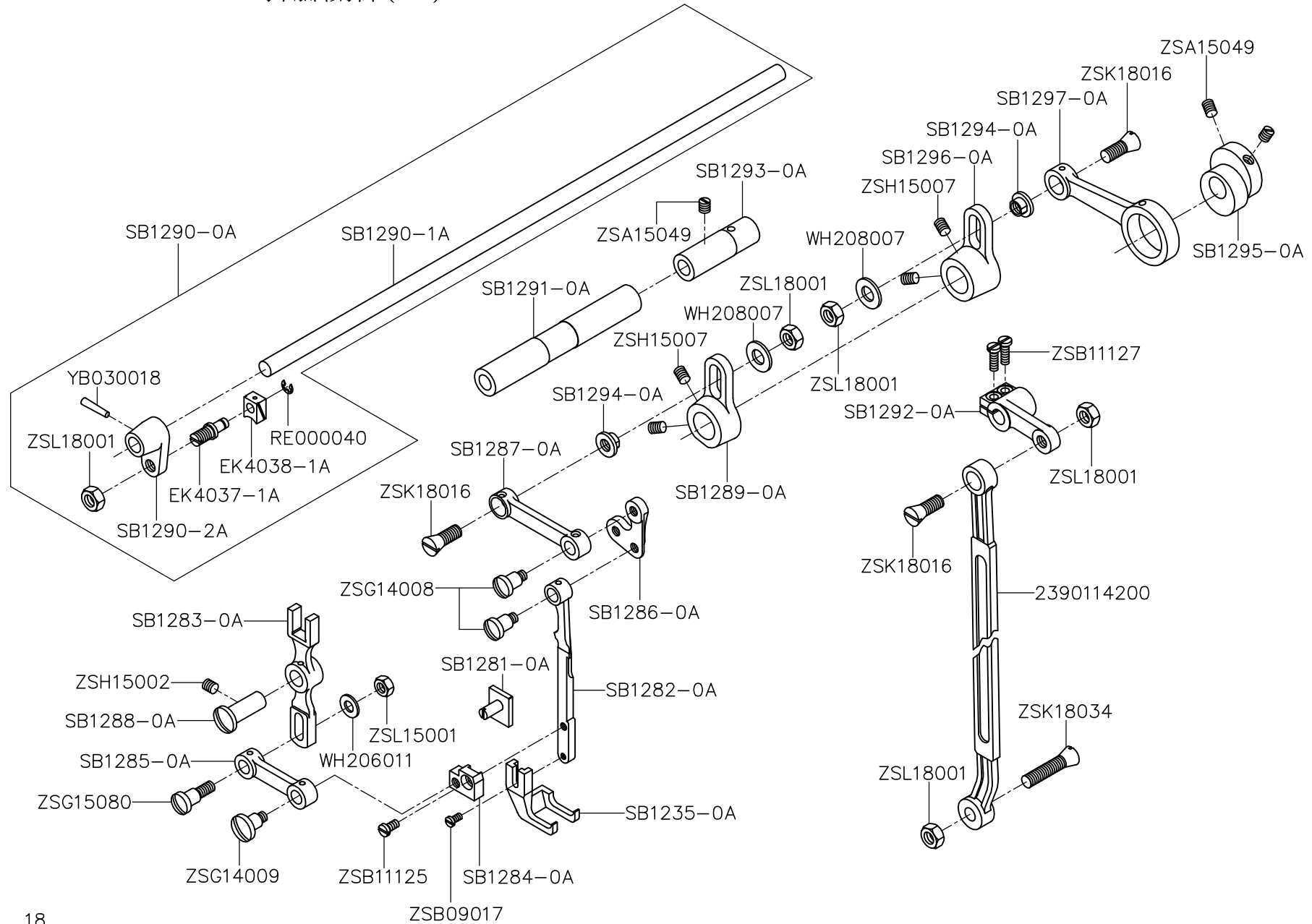
H. CS-2390.2391 壓腳關係(一) PRESSER BAR & KNEE LIFTER COMPONENTS



H、CS-2390、2391 押腳關係(一) PRESSER BAR & KNEE LIFTER COMPONENTS

零件號碼	零件名稱	Name of Part	件數 Q, TY		零件號碼	零件名稱	Name of Part	件數 Q, TY	
Part No			2390	2391	Part No			2390	2391
2180153305	押腳	PRESSER FOOT	1	0					
2390150500	押棒固定座	LIFTING BRACKET	1	0					
AB4460-0A	滾輪	ROLLER	1	1					
SB1180-0A	押棒	PRESSER BAR	1	1					
SB1182-0B	定位板	GUIDE	0	1					
SB1184-0A	壓縮彈簧	TENSION SPRING	1	1					
SB1185-0B	押棒固定座	PRESSER BAR FIXED BASE	0	1					
SB1186-0A	連接板	LIFTING LEVER LINK	1	1					
SB1187-0B	押棒固定座	LIFTING BRACKET	0	1					
SB1189-0A	螺絲	SCREW(M5-0.8x12)	1	1					
SB1200-0A	提升桿	PROMOTE SHAFT	1	1					
SB1203-0A	鬆線架	TENSION RELEASING LEVER	1	1					
SB1237-0A	押腳	WORK CLAMP FOOT	0	1					
WB051001	彈簧墊片	SPRING WASHER	1	1					
ZML05005	螺帽	NUT	1	1					
ZSB09002	螺絲	SCREW (SM9/64-40x10)	1	3					
ZSF32001	螺絲	PRESSER BAR ADJUSTING SCREW	1	1					
ZSG11107	螺絲	SCREW (SM11/64-40x7)	1	1					
ZSG12075	螺絲	SCREW (SM3/16-32x5)	1	1					
ZSG14008	螺絲	SCREW (SM7/32-32x5)	0	1					
ZSG15076	螺絲	SCREW (SM15/64-28x8)	1	1					
ZSH15001	螺絲	SCREW (SM15/64-28x6)	1	1					

I.CS-2390/2391 押腳關係(二) PRESSER BAR & KNEE LIFTER COMPONENTS

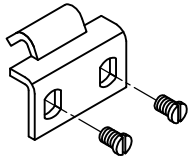


I、CS-2390、2391 押腳關係(二) PRESSER BAR & KNEE LIFTER COMPONENTS

零件號碼 Part No	零件名稱	Name of Part	件數 Q, TY		零件號碼 Part No	零件名稱	Name of Part	件數 Q, TY	
			2390	2391				2390	2391
2390114200	前後連桿	CONNECTING ROD	0	1	RE000040	止輪	E RING	0	1
EK4037-1A	銷	PIN	0	1	WH206011	研磨墊圈	WASHER	0	1
EK4038-1A	送料角驅	SLIDE BLOCK	0	1	WH208007	研磨墊圈	WASHER	0	2
SB1235-0A	外押腳	OUTSIDE PRESSER FOOT	0	1	YB030018	推拔銷	TAPER PIN	0	1
SB1281-0A	押腳擋板	STOP BRACKET	0	1	ZSA15049	螺絲	SCREW (SM15/64-28x28)	0	5
SB1282-0A	押腳引導板	OUTSIDE PRESSER BAR	0	1	ZSB09017	螺絲	SCREW (SM9/64-40x8)	0	1
SB1283-0A	前後叉臂	FEED FORKED CONNECTION	0	1	ZSB11125	螺絲	SCREW (SM11/64-40x6)	0	1
SB1284-0A	擋塊	GUIDE BRACKET	0	1	ZSB11127	螺絲	SCREW (SM11/64-40x10.5)	0	2
SB1285-0A	連桿	LIFTING LEVER LINK	0	1	ZSG14008	螺絲	SCREW (SM7/32-32x5)	0	2
SB1286-0A	L型連桿	GUIDE BRACKET	0	1	ZSG14009	螺絲	SCREW (SM7/32-32x5)	0	1
SB1287-0A	連桿	CONNECTING ROD	0	1	ZSG15080	螺絲	SCREW (SM15/64-28x12)	0	1
SB1288-0A	銷	PIN	0	1	ZSH15002	螺絲	SCREW (SM15/64-28x8)	0	1
SB1289-0A	搖動曲柄(小)	CRANK	0	1	ZSH15007	螺絲	SCREW (SM15/64-28x8)	0	4
SB1290-0A	上送料軸組	FEED ROCK SHAFT ASSY.	0	1	ZSK18016	螺絲	SCREW (SM9/32-28)	0	3
SB1290-1A	上送料軸	FEED ROCK SHAFT	0	1	ZSK18034	螺絲	SCREW (SM9/32-28)	0	1
SB1290-2A	上部舉常搖	CRANK ASM	0	1	ZSL15001	螺帽	NUT (SM15/64-28)	0	1
SB1291-0A	上部舉升搖	ROCKER ARM ASM.	0	1	ZSL18001	螺帽	NUT (SM9/32-28)	0	5
SB1292-0A	送料連桿	FEED ROCK SHAFT CRANK	0	1					
SB1293-0A	中軸後套管	REAR FEED ROCK SHAFT	0	1					
SB1294-0A	螺絲帽	CONNECTING ROD	0	2					
SB1295-0A	偏心輪	FEED REGULATOR STUD	0	1					
SB1296-0A	搖動曲柄(大)	CRANK	0	1					
SB1297-0A	送料連接桿	FEED CONNECTING LINK	0	1					

J. CS-2390.2391 附件(一) ACCESSORIES(1)

A7021-0A

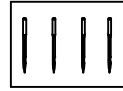


ZSB15010

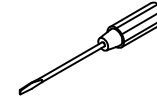
ZMT05001



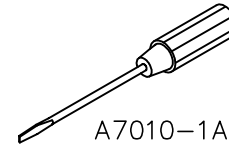
A7026-0A



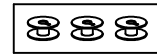
DPx17#18



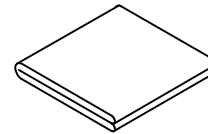
A7010-0A



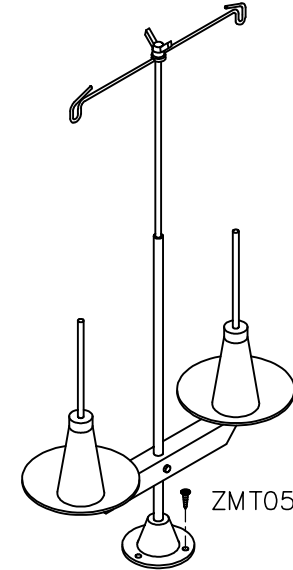
A7010-1A



E7006-1B

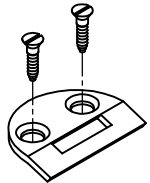


C7001-0A

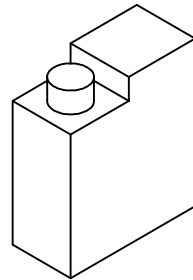


J7050-0A

ZMT06001



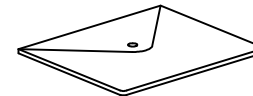
A7020-0A



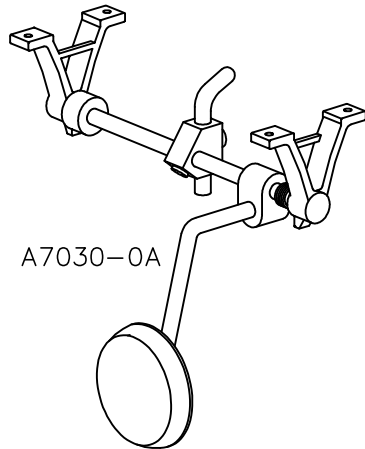
A7012-2A



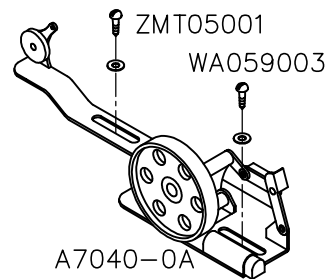
A7012-1A



A7000-0A



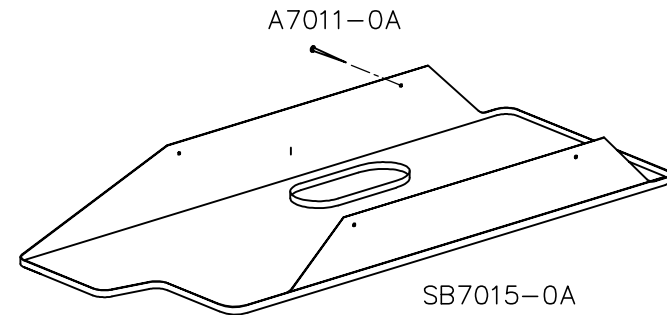
A7030-0A



A7040-0A



A7025-0A

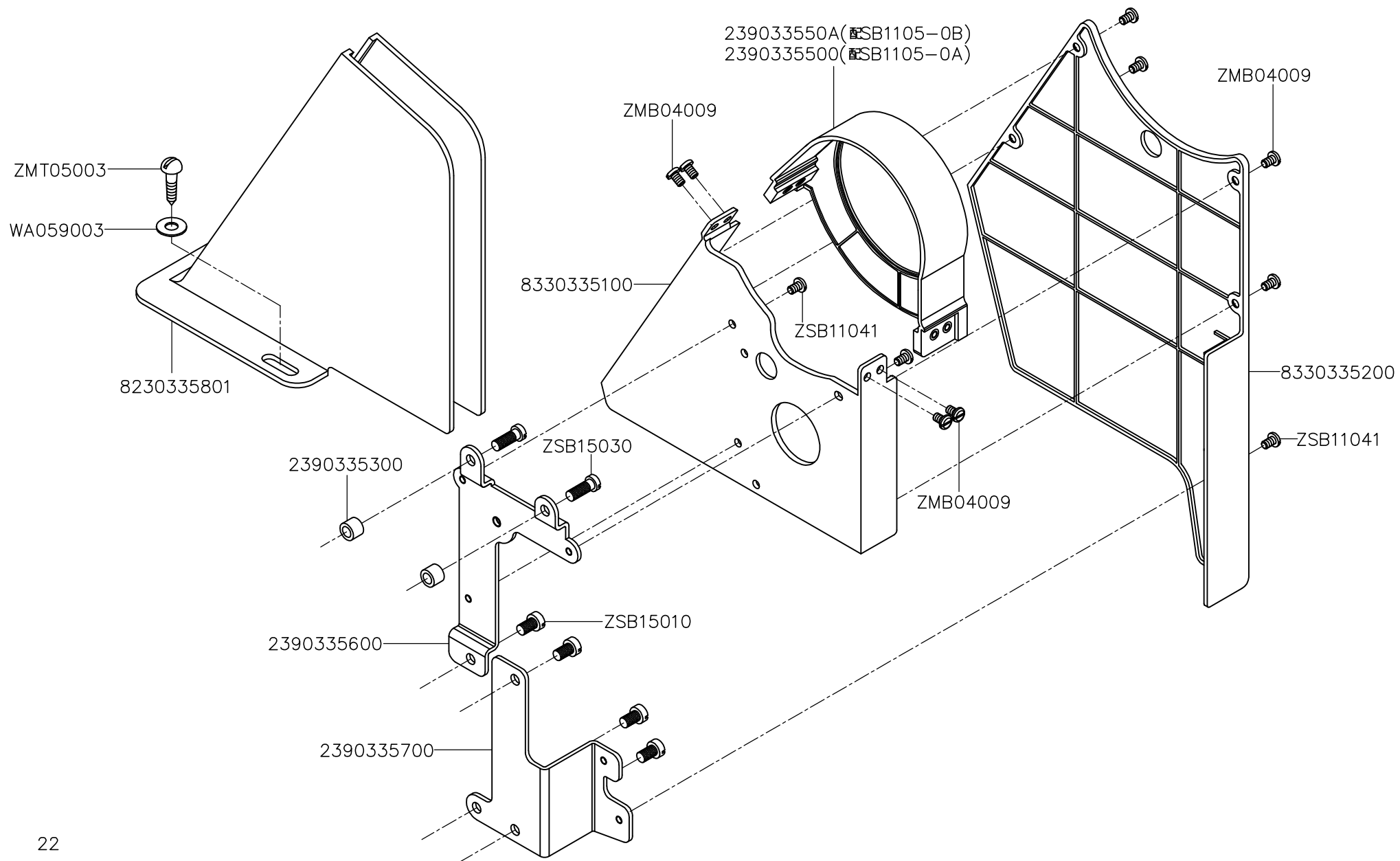


SB7015-0A

J、CS-2390、2391 附件(一) ACCESSORIES(一)

零件號碼	零件名稱	Name of Part	件數 Q, TY		零件號碼	零件名稱	Name of Part	件數 Q, TY	
Part No			2390	2391	Part No			2390	2391
A7000-0A	工具袋	ACCESSORY BAG	1	1					
A7010-0A	螺絲起子(小)	SCREW DRIVER (SMALL)	1	1					
A7010-1A	螺絲起子(中)	SCREW DRIVER (MIDDLE)	1	1					
A7011-0A	鐵釘	NAIL	4	4					
A7012-1A	油壺(中)	OILER (MIDDLE)	1	1					
A7012-2A	油壺(大)	OILER (LARGE)	1	1					
A7020-0A	半圓形後鈕	HINGE	2	2					
A7021-0A	方形後鈕	HINGE	2	2					
A7025-0A	枕木	MACHINE REST PIN (WOOD)	1	1					
A7026-0A	橡膠墊	VIBRATION PREVENTING DDE	4	4					
A7030-0A	脚弓組	KNEE LIFTER ASSY.	1	1					
A7040-0A	捲線器組	BOBBIN WINDER ASSY.	1	1					
C7001-0A	車頭蓋	VINYL COVER	1	1					
DPx17#18	針	NEEDLE	4	4					
E7006-1B	梭仔	BOBBIN	3	3					
J7050-0A	線架組	THREAD STAND	1	1					
SB7015-0A	下油槽	OIL RESERVOIR	1	1					
WA059003	平墊圈	WASHER	2	2					
ZMT05001	螺絲	SCREW	6	6					
ZMT06001	螺絲	SCREW (5.5x25)	4	4					
ZSB15010	螺絲	SCREW (15/64-28x10)	4	4					

K. CS-2390.2391 附件(二) ACCESSORIES (2)



K、CS-2390、2391 附件(二) ACCESSORIES(二)

零件號碼 Part No	零件名稱 Name of Part	件數 Q, TY		零件號碼 Part No	零件名稱 Name of Part	件數 Q, TY	
		2390	2391			2390	2391
2390335300	套環-----	BUSHING-----	2	2			
2390335500	皮帶蓋組-----	BELT COVER ASM.-----	1	0			
239033550A	皮帶蓋組-----	BELT COVER ASM.-----	0	1			
2390335600	固定板-----	HOLDER PLATE-----	1	1			
2390335700	固定板-----	HOLDER PLATE-----	1	1			
8230335801	皮帶蓋 D-----	BELT COVER D-----	1	1			
8330335100	皮帶蓋 A-----	BELT COVER A-----	1	1			
8330335200	皮帶蓋 B-----	BELT COVER B-----	1	1			
WA059003	墊圈-----	WASHER-----	2	2			
ZMB04009	螺絲-----	SCREW(M4-0.7x6)-----	8	8			
ZMT05003	木螺絲-----	WOOD SCREW-----	2	2			
ZSB11041	螺絲-----	SCREW(11/64-40x7)-----	4	4			
ZSB15010	螺絲-----	SCREW(15/64-28x10)-----	3	3			
ZSB15030	螺絲-----	SCREW(15/64-28x16.5)-----	2	2			

L、CS-2390、2391 零件號碼與頁數對照 NUMERICAL PARTS-LIST

零件號碼 PARTS NO.	頁數 PAGE	零件號碼 PARTS NO.	頁數 PAGE	零件號碼 PARTS NO.	頁數 PAGE	零件號碼 PARTS NO.	頁數 PAGE	零件號碼 PARTS NO.	頁數 PAGE
2180153305	16	2390335700	22	C1174-0A	10	SB1074-0A	8	SB1185-0B	16
2390110100	4	2390340300	10	C7001-0A	20	SB1076-0A	8	SB1186-0A	16
2390110201	4	2390401100	6	DPx17#18	8,20	SB1078-0A	8	SB1187-0B	16
2390111100	2	2390601100	14	E1052-0A	2	SB1081-0A	8	SB1188-0A	10
2390111304	14	2390601300	14	E1172-2A	10	SB1090-0A	8	SB1189-0A	16
2390114200	18	2390602000	6	E1174-2A	10	SB1091-0A	8	SB1190-0A	10
2390116304	14	2390615100	14	E1194-0A	10	SB1092-0A	8	SB1192-0B	10
2390116305	14	2391110100	4	E7006-1B	14,20	SB1095-0A	8	SB1200-0A	16
2390122000	10	5100164100	10	EK4037-1A	18	SB1100-0A	6	SB1203-0A	16
2390130100	4	6103341205	10	EK4038-1A	18	SB1101-0A	6	SB1235-0A	18
2390132000	6	8230335801	22	J7050-0A	20	SB1103-0A	6	SB1237-0A	16
2390150500	16	8330335100	22	KHS-20-TZ	14	SB1104-0A	6	SB1279-0A	2
2390160101	14	8330335200	22	PA1052-0A	2	SB1105-0A	6	SB1281-0A	18
2390160900	10	A1021-0A	2	RB200120	12	SB1105-0B	6	SB1282-0A	18
2390161000	10	A1025-0A	2	RE000040	18	SB1106-0A	6	SB1283-0A	18
2390161100	10	A1034-0A	2	S1055-0A	2	SB1108-0A	6	SB1284-0A	18
2390161402	14	A1051-0A	2	SB1010-0A	2	SB1109-0A	6	SB1285-0A	18
2390162404	14	A1117-0A	10	SB1012-0A	2	SB1111-0A	6	SB1286-0A	18
2390162504	14	A4037-0A	12	SB1013-0A	2	SB1113-0A	6	SB1287-0A	18
2390163200	14	A6053-0A	14	SB1014-0A	2	SB1134-0A	6	SB1288-0A	18
2390164800	12	A7000-0A	20	SB1020-0A	2	SB1155-0A	10	SB1289-0A	18
2390170100	10	A7010-0A	20	SB1026-0A	2	SB1158-0A	10	SB1290-0A	18
2390174304	14	A7010-1A	20	SB1027-0A	2	SB1160-0A	10	SB1290-1A	18
23901836A1	14	A7011-0A	20	SB1028-0A	2	SB1161-0A	10	SB1290-2A	18
2390183701	14	A7012-1A	20	SB1029-0A	2	SB1162-0A	10	SB1291-0A	18
2390185800	14	A7012-2A	20	SB1050-0A	2	SB1166-0A	10	SB1292-0A	18
2390186403	14	A7020-0A	20	SB1060-0A	8	SB1170-0B	10	SB1293-0A	18
2390187100	4	A7021-0A	20	SB1061-0A	8	SB1171-0B	10	SB1294-0A	18
2390187101	14	A7025-0A	20	SB1062-0A	2	SB1174-0A	10	SB1295-0A	18
2390187600	14	A7026-0A	20	SB1063-0A	8	SB1175-0A	8	SB1296-0A	18
2390187700	14	A7030-0A	20	SB1064-0A	8	SB1176-0A	8	SB1297-0A	18
2390335300	22	A7040-0A	20	SB1065-0A	8	SB1177-0A	10	SB1310-0A	8
2390335500	22	AB4460-0A	16	SB1066-0A	8	SB1180-0A	16	SB1311-0A	8
239033550A	22	BB6900ZZNR	14	SB1067-0A	8	SB1182-0B	16	SB1312-0A	8
2390335600	22	BBFL696ZZ	14	SB1070-0A	8	SB1184-0A	16	SB1313-0A	8

L、CS-2390、2391 零件號碼與頁數對照 NUMERICAL PARTS-LIST

零件號碼 PARTS NO.	頁數 PAGE	零件號碼 PARTS NO.	頁數 PAGE	零件號碼 PARTS NO.	頁數 PAGE	零件號碼 PARTS NO.	頁數 PAGE	零件號碼 PARTS NO.	頁數 PAGE
SB1314-0A	8	SB7015-0A	20	ZSA11004	6,12	ZSB11127	14,18	ZSH15002	10,18
SB1320-0A	2	SC34-L	14	ZSA11005	2	ZSB12003	10	ZSH15007	8,10,18
SB1321-0A	2	SEN1050500	14	ZSA15005	6,8	ZSB12005	2	ZSH16001	6,14
SB1322-0A	2	WA030003	8	ZSA15006	2	ZSB12017	10	ZSJ32004	4
SB1360-0A	2	WA030015	14	ZSA15016	8	ZSB12042	10	ZSK09001	8
SB1450-0A	8	WA050010	8	ZSA15017	6,10	ZSB12057	8	ZSK18016	10,18
SB1451-0A	8	WA059003	20,22	ZSA15018	6	ZSB12058	8	ZSK18032	8
SB1452-0A	8	WB051001	16	ZSA15021	8	ZSB12061	2	ZSK18034	18
SB1453-0A	6	WC089001	10	ZSA15028	6,8,14	ZSB15010	20,22	ZSL09002	2
SB1454-0A	8	WC119001	8	ZSA15048	10,12	ZSB15030	22	ZSL12001	10
SB1455-0A	8	WH100002	4	ZSA15049	12,18	ZSB16038	10	ZSL12009	8
SB1456-0A	8	WH104002	8	ZSA16010	6	ZSB18014	6	ZSL15001	18
SB1457-0A	8	WH113001	4	ZSA16012	12	ZSB20012	6	ZSL16010	14
SB1458-0A	8	WH206011	18	ZSA16013	6	ZSC09031	8,10	ZSL18001	8,10,18
SB1459-0A	8	WH208007	18	ZSA16022	8	ZSC09039	14	ZSN16006	2
SB4010-0A	6	WH212008	12	ZSA18001	6	ZSC11003	14	ZSQ09008	2
SB4013-0A	6	XB132001	2	ZSB08027	8	ZSC11019	8	ZSQ11001	4
SB4014-0A	6	XB333001	2	ZSB09002	2,16	ZSD24004	4		
SB4020-0A	6	YA060270	4	ZSB09011	6,8,10,14	ZSF12002	8		
SB4021-0A	6,14	YB030016	2	ZSB09016	14	ZSF15003	6		
SB4022-0A	6	YB030018	18	ZSB09017	18	ZSF32001	16		
SB4030-0A	12	YD060050	2	ZSB09021	8	ZSG11107	16		
SB4032-0A	12	ZMB03007	14	ZSB09036	14	ZSG12007	14		
SB4033-0A	12	ZMB04009	22	ZSB09047	2	ZSG12075	16		
SB4035-0A	12	ZMB05004	14	ZSB09079	2,8	ZSG14008	16,18		
SB4036-0A	12	ZMH05001	14	ZSB09080	2	ZSG14009	18		
SB4037-0A	12	ZMJ06004	6	ZSB11009	12	ZSG15043	10		
SB4038-0A	12	ZMJ06008	2	ZSB11010	12	ZSG15076	16		
SB4040-0A	12	ZMJ10006	4	ZSB11015	14	ZSG15080	18		
SB4041-0A	12	ZML05005	16	ZSB11017	12	ZSG16007	14		
SB4042-0A	12	ZMT05001	20	ZSB11019	12	ZSG18003	6		
SB4043-0A	12	ZMT05003	22	ZSB11020	8	ZSG18024	10		
SB4046-0A	12	ZMT06001	20	ZSB11031	8	ZSG20016	10		
SB4051-0A	12	ZSA09003	14	ZSB11041	22	ZSH11004	8		
SB4052-0A	12	ZSA11002	8	ZSB11125	18	ZSH15001	16		